

# Impact sheets for selected major Temporary Capacity Restrictions (TCR)

## Foreword

On RFC North Sea – Baltic we introduced the **TCR Impact sheets** to present in one glance general and important information about upcoming TCRs. These impact sheets highlight **some infrastructure works which have a big impact** on international rail freight traffic along RFC North Sea – Baltic.

## Disclaimer:

The content of this document has been compiled with meticulous care based on information available at the publication date. However we cannot assume any liability for accuracy and accept no liability for damages suffered as a result of defects of this document.

For detailed and complete customer information we kindly refer to the information which is available via the involved national Infrastructure Managers.

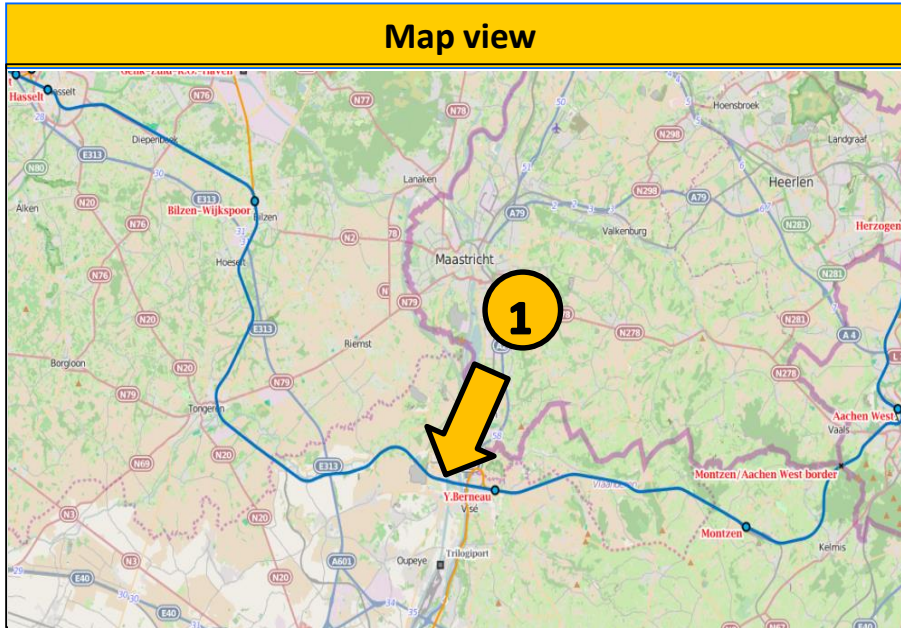
Further information (e.g. in form of an excel list on all planned TCR) is available on the website of RFC NS-B under link: [http://rfc8.eu/files/public/uploads/Downloads/Temporary\\_Capacity\\_Rest/TCR RFC8 2019-2020-2021.xlsx](http://rfc8.eu/files/public/uploads/Downloads/Temporary_Capacity_Rest/TCR RFC8 2019-2020-2021.xlsx)

Version 1 for timetable 2020  
Publication Date March 2019



# Impact of TCR TT 2020 at INFRABEL

## Section Antwerp - Montzen



### Impact on International Rail Freight

- percentage of rerouting or cancellation: 100% rerouting (TLC)
- extra running time for freight trains: tbd
- deviation: via Bressoux-Kinkempois-Leuven (TLC)
- timetable: running TT
- Restrictions in train parameters: Class 66 weight limit to 1760 ton towards Aachen
- Restriction in container profiles: yes
  - needs C60, C390, P60, P380

### Major Capacity Restriction

Location: Y. Glons - Visé

Type:

- Total Line Closure (TLC) (see calendar)
- Works: Signalling works
- Duration: Continuous (see calendar)

### Location Y. Glons - Visé

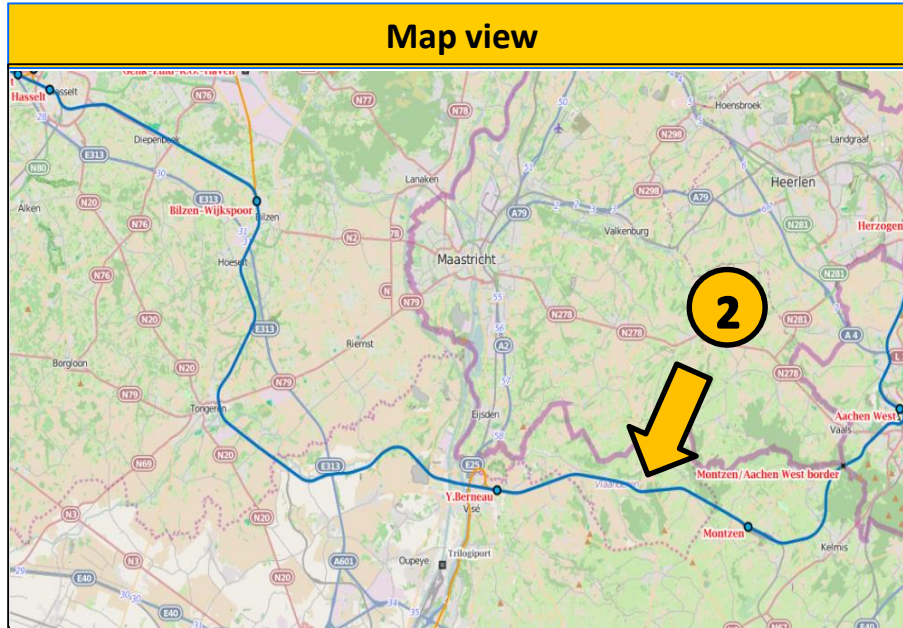
Works: Signalling works

Single track operation (Yellow) Total closure (Red)

January							February							March							April						
KW	Mo	Tu	We	Th	Fr	Sa	KW	Mo	Tu	We	Th	Fr	Sa	KW	Mo	Tu	We	Th	Fr	Sa	KW	Mo	Tu	We	Th	Fr	Sa
1			1	2	3	4	5				1	2	9						1	14			1	2	3	4	
2	6	7	8	9	10	11	6	3	4	5	6	7	10	2	3	4	5	6	7	15	6	7	8	9	10	11	
3	13	14	15	16	17	18	7	10	11	12	13	14	11	9	10	11	12	13	14	16	13	14	15	16	17	18	
4	20	21	22	23	24	25	8	17	18	19	20	21	12	16	17	18	19	20	21	17	20	21	22	23	24	25	
5	27	28	29	30	31		9	24	25	26	27	28	13	23	24	25	26	27	28	18	27	28	29	30			
							10						14	30	31												
May							June							July							August						
KW	Mo	Tu	We	Th	Fr	Sa	KW	Mo	Tu	We	Th	Fr	Sa	KW	Mo	Tu	We	Th	Fr	Sa	KW	Mo	Tu	We	Th	Fr	Sa
18					1	2	23	1	2	3	4	5	27							31							
19	4	5	6	7	8	9	24	8	9	10	11	12	28	6	7	8	9	10	11	32	3	4	5	6	7	8	
20	11	12	13	14	15	16	25	15	16	17	18	19	29	13	14	15	16	17	18	33	10	11	12	13	14	15	
21	18	19	20	21	22	23	26	22	23	24	25	26	30	20	21	22	23	24	25	34	17	18	19	20	21	22	
22	25	26	27	28	29	30	27	29	30				31	27	28	29	30	31		35	24	25	26	27	28	29	
																				36	31						
September							October							November							December						
KW	Mo	Tu	We	Th	Fr	Sa	KW	Mo	Tu	We	Th	Fr	Sa	KW	Mo	Tu	We	Th	Fr	Sa	KW	Mo	Tu	We	Th	Fr	Sa
36		1	2	3	4	5	40			1	2	3	44						1	48		1	2	3	4	5	
37	7	8	9	10	11	12	41	5	6	7	8	9	45	2	3	4	5	6	7	49	7	8	9	10	11	12	
38	14	15	16	17	18	19	42	12	13	14	15	16	46	9	10	11	12	13	14	51	14	15	16	17	18	19	
39	21	22	23	24	25	26	43	19	20	21	22	23	47	16	17	18	19	20	21	52	21	22	23	24	25	26	
40	28	29	30				44	26	27	28	29	30	48	23	24	25	26	27	28	53	28	29	30	31			
													49	30													

# Impact of TCR TT 2020 at INFRABEL

## Section Antwerp - Montzen



### Impact on International Rail Freight

- percentage of rerouting or cancellation: 100% rerouting (TLC)
- extra running time for freight trains: tbd
- deviation: via Bressoux-Kinkempois-Leuven (TLC)
- timetable: running TT
- Restrictions in train parameters: Class 66 weight limit to 1760 ton towards Aachen
- Restriction in container profiles: yes
  - needs C60, C390, P60, P380

### Major Capacity Restriction

Location: Visé - Montzen

Type:

- Total Line Closure (TLC) (see calendar)
- Single track operation (see calendar)
- Works: signalling works
- Duration: Continuous (see calendar)

### Location Visé - Montzen

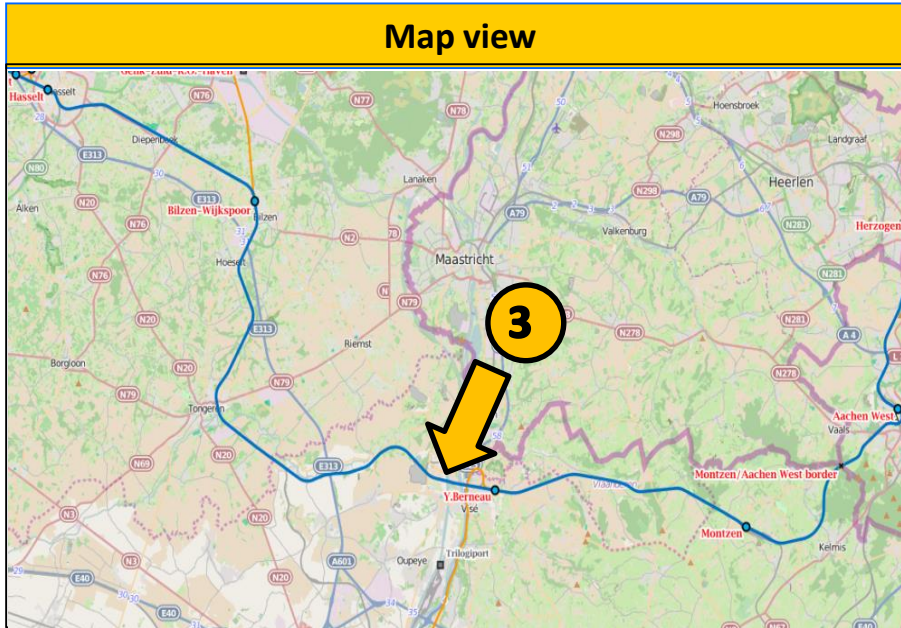
Works: Signalling works

■ Single track operation
 ■ Total closure

January							February							March							April							
KW	Mo	Di	Mi	Do	Fr	Sa	KW	Mo	Di	Mi	Do	Fr	Sa	KW	Mo	Di	Mi	Do	Fr	Sa	KW	Mo	Di	Mi	Do	Fr	Sa	
1			1	2	3	4	5					1	2	9						1	14			1	2	3	4	
2	6	7	8	9	10	11	6	3	4	5	6	7	8	10	2	3	4	5	6	7	8	15	6	7	8	9	10	11
3	13	14	15	16	17	18	7	10	11	12	13	14	15	11	9	10	11	12	13	14	15	16	13	14	15	16	17	18
4	20	21	22	23	24	25	8	17	18	19	20	21	22	12	16	17	18	19	20	21	22	17	20	21	22	23	24	25
5	27	28	29	30	31		9	24	25	26	27	28	29	13	23	24	25	26	27	28	29	18	27	28	29	30		
														14	30	31												
May							June							July							August							
KW	Mo	Di	Mi	Do	Fr	Sa	KW	Mo	Di	Mi	Do	Fr	Sa	KW	Mo	Di	Mi	Do	Fr	Sa	KW	Mo	Di	Mi	Do	Fr	Sa	
18					1	2	23	1	2	3	4	5	6	27						1	31						1	
19	4	5	6	7	8	9	24	8	9	10	11	12	13	28	6	7	8	9	10	11	12	32	3	4	5	6	7	8
20	11	12	13	14	15	16	25	15	16	17	18	19	20	29	13	14	15	16	17	18	19	33	10	11	12	13	14	15
21	18	19	20	21	22	23	26	22	23	24	25	26	27	30	20	21	22	23	24	25	26	34	17	18	19	20	21	22
22	25	26	27	28	29	30	27	29	30					31	27	28	29	30	31			35	24	25	26	27	28	29
																						36	31					
September							Oktober							November							December							
KW	Mo	Di	Mi	Do	Fr	Sa	KW	Mo	Di	Mi	Do	Fr	Sa	KW	Mo	Di	Mi	Do	Fr	Sa	KW	Mo	Di	Mi	Do	Fr	Sa	
36		1	2	3	4	5	40			1	2	3	4	44						1	48			1	2	3	4	
37	7	8	9	10	11	12	41	5	6	7	8	9	10	45	2	3	4	5	6	7	8	49	7	8	9	10	11	12
38	14	15	16	17	18	19	42	12	13	14	15	16	17	46	9	10	11	12	13	14	15	50	14	15	16	17	18	19
39	21	22	23	24	25	26	43	19	20	21	22	23	24	47	16	17	18	19	20	21	22	51	21	22	23	24	25	26
40	28	29	30				44	26	27	28	29	30	31	48	23	24	25	26	27	28	29	52	28	29	30	31		
														49	30							53						

# Impact of TCR TT 2020 at INFRABEL

## Section Antwerp - Montzen



### Impact on International Rail Freight

- percentage of rerouting or cancellation: 100% rerouting (TLC)
- extra running time for freight trains: tbd
- deviation: via Bressoux-Kinkempois-Leuven (TLC)
- timetable: running TT
- Restrictions in train parameters: Class 66 weight limit to 1760 ton towards Aachen
- Restriction in container profiles: yes
  - needs C60, C390, P60, P380

### Major Capacity Restriction

Location: Bassenge - Visé

Type:

Single track operation (see calendar)

- Works: renewal of bridge and ballast
- Duration: Continuous (see calendar)

### Location Bassenge - Visé

Works: renewal of bridge and ballast

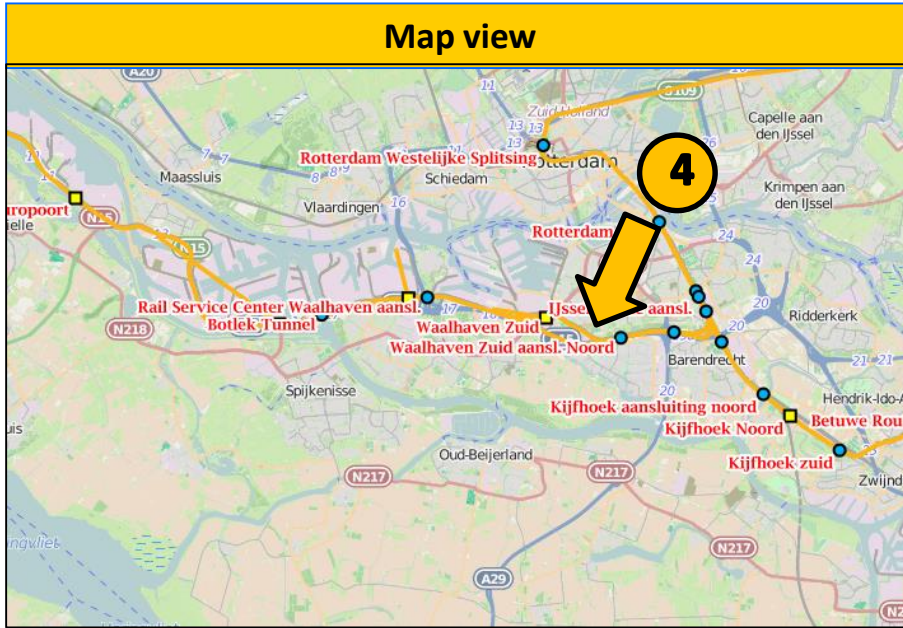
Single track operation

Total closure

January							February							March							April						
KW	Mo	Di	Mi	Do	Fr	Sa	KW	Mo	Di	Mi	Do	Fr	Sa	KW	Mo	Di	Mi	Do	Fr	Sa	KW	Mo	Di	Mi	Do	Fr	Sa
1			1	2	3	4	5					1	2	9						1	14			1	2	3	4
2	6	7	8	9	10	11	6	3	4	5	6	7	8	10	2	3	4	5	6	7	15	6	7	8	9	10	11
3	13	14	15	16	17	18	7	10	11	12	13	14	15	11	9	10	11	12	13	14	16	13	14	15	16	17	18
4	20	21	22	23	24	25	8	17	18	19	20	21	22	12	16	17	18	19	20	21	17	20	21	22	23	24	25
5	27	28	29	30	31		9	24	25	26	27	28	29	13	23	24	25	26	27	28	18	27	28	29	30		
														14	30	31											
May							June							July							August						
KW	Mo	Di	Mi	Do	Fr	Sa	KW	Mo	Di	Mi	Do	Fr	Sa	KW	Mo	Di	Mi	Do	Fr	Sa	KW	Mo	Di	Mi	Do	Fr	Sa
18					1	2	23	1	2	3	4	5	27			1	2	3	31						1		
19	4	5	6	7	8	9	24	8	9	10	11	12	28	6	7	8	9	10	32	3	4	5	6	7	8		
20	11	12	13	14	15	16	25	15	16	17	18	19	29	13	14	15	16	17	33	10	11	12	13	14	15		
21	18	19	20	21	22	23	26	22	23	24	25	26	30	20	21	22	23	24	34	17	18	19	20	21	22		
22	25	26	27	28	29	30	27	29	30				31	27	28	29	30	31	35	24	25	26	27	28	29		
																			36	31							
September							Oktober							November							December						
KW	Mo	Di	Mi	Do	Fr	Sa	KW	Mo	Di	Mi	Do	Fr	Sa	KW	Mo	Di	Mi	Do	Fr	Sa	KW	Mo	Di	Mi	Do	Fr	Sa
36		1	2	3	4	5	40			1	2	3	4	44						1	48		1	2	3	4	5
37	7	8	9	10	11	12	41	5	6	7	8	9	45	2	3	4	5	6	7	49	7	8	9	10	11	12	
38	14	15	16	17	18	19	42	12	13	14	15	16	46	9	10	11	12	13	14	51	14	15	16	17	18	19	
39	21	22	23	24	25	26	43	19	20	21	22	23	47	16	17	18	19	20	21	52	21	22	23	24	25	26	
40	28	29	30				44	26	27	28	29	30	48	23	24	25	26	27	28	53	28	29	30	31			
													49	30													

# Impact of TCR TT 2020 at ProRail

## Section Kijfhoek - Maasvlakte



### Impact on International Rail Freight

- percentage of rerouting or cancellation: 100% rerouting (TLC)
- extra running time for freight trains: tbd
- Deviation: no traffic possible
- timetable: in annual TT
- Restrictions in train parameters: not applicable
- Works planned in combination with TLC Emmerich - Oberhausen

### Major Capacity Restriction

Location: Kijfhoek - Maasvlakte

Type:

- Total Line Closure
- No traffic possible
- Works: signaling works
- Duration: 32 hours Continuous (see calendar)

### Location Kijfhoek - Maasvlakte

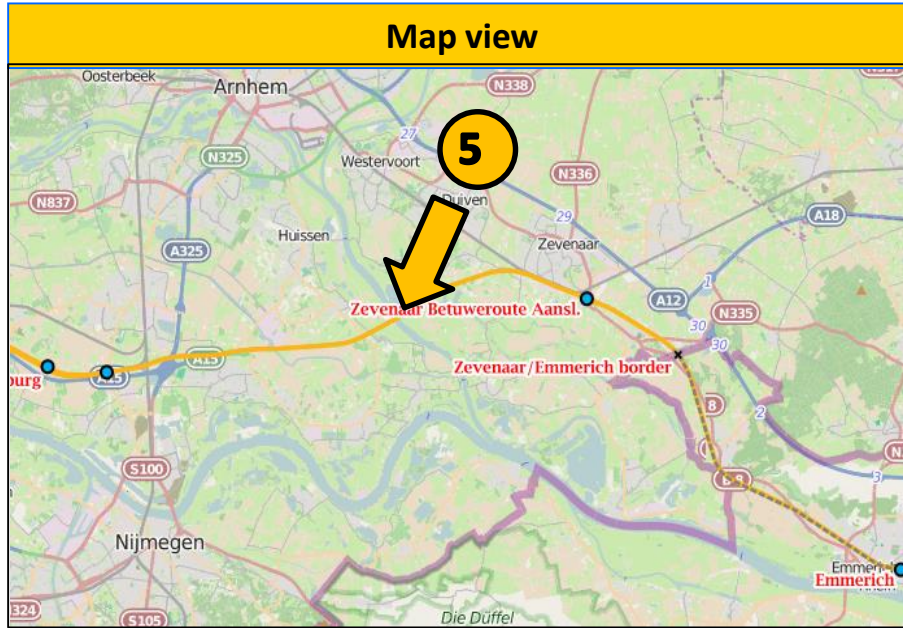
Works: Signalling works

■ Single track operation ■ Total closure

January							February							March							April							
kw	Mo	Di	Mi	Do	Fr	Sa	kw	Mo	Di	Mi	Do	Fr	Sa	kw	Mo	Di	Mi	Do	Fr	Sa	kw	Mo	Di	Mi	Do	Fr	Sa	
1			1	2	3	4	5					1	2	9						1	14			1	2	3	4	
2	6	7	8	9	10	11	6	3	4	5	6	7	8	10	2	3	4	5	6	7	8	15	6	7	8	9	10	11
3	13	14	15	16	17	18	7	10	11	12	13	14	15	11	9	10	11	12	13	14	15	16	13	14	15	16	17	18
4	20	21	22	23	24	25	8	17	18	19	20	21	22	12	16	17	18	19	20	21	22	17	20	21	22	23	24	25
5	27	28	29	30	31		9	24	25	26	27	28	29	13	23	24	25	26	27	28	29	18	27	28	29	30		
														14	30	31												
May							June							July							August							
kw	Mo	Di	Mi	Do	Fr	Sa	kw	Mo	Di	Mi	Do	Fr	Sa	kw	Mo	Di	Mi	Do	Fr	Sa	kw	Mo	Di	Mi	Do	Fr	Sa	
18					1	2	23	1	2	3	4	5	27			1	2	3	4	5	31						1	
19	4	5	6	7	8	9	24	8	9	10	11	12	13	28	6	7	8	9	10	11	12	32	3	4	5	6	7	8
20	11	12	13	14	15	16	25	15	16	17	18	19	20	29	13	14	15	16	17	18	19	33	10	11	12	13	14	15
21	18	19	20	21	22	23	26	22	23	24	25	26	27	30	20	21	22	23	24	25	26	34	17	18	19	20	21	22
22	25	26	27	28	29	30	27	29	30					31	27	28	29	30	31			35	24	25	26	27	28	29
																						36	31					
September							Oktober							November							December							
kw	Mo	Di	Mi	Do	Fr	Sa	kw	Mo	Di	Mi	Do	Fr	Sa	kw	Mo	Di	Mi	Do	Fr	Sa	kw	Mo	Di	Mi	Do	Fr	Sa	
36		1	2	3	4	5	40			1	2	3	4	44						1	48		1	2	3	4	5	
37	7	8	9	10	11	12	41	5	6	7	8	9	10	45	2	3	4	5	6	7	8	49	7	8	9	10	11	12
38	14	15	16	17	18	19	42	12	13	14	15	16	17	46	9	10	11	12	13	14	15	51	14	15	16	17	18	19
39	21	22	23	24	25	26	43	19	20	21	22	23	24	47	16	17	18	19	20	21	22	52	21	22	23	24	25	26
40	28	29	30				44	26	27	28	29	30	31	48	23	24	25	26	27	28	29	53	28	29	30	31		
														49	30													

# Impact of TCR TT 2020 at ProRail

## Section Meteren – Zevenaar Border



### Impact on International Rail Freight

- percentage of rerouting or cancellation: 100% rerouting (TLC)
- extra running time for freight trains: 30-90 minutes
- deviation: via Venlo or via Bad Bentheim (TLC)
- timetable: running TT
- Restrictions in train parameters: no
- Restriction in container profiles: no
- Works planned in combination with TLC Emmerich - Oberhausen

### Major Capacity Restriction

Location: Meteren – Zevenaar border

Type:

- Total Line Closure (TLC) (see calendar)
- Works: Renewal technical installation in tunnel
- Duration: 24 hours, continuous (see calendar)

### Location: Meteren - Zevenaar border

Works: Technical installation in tunnel

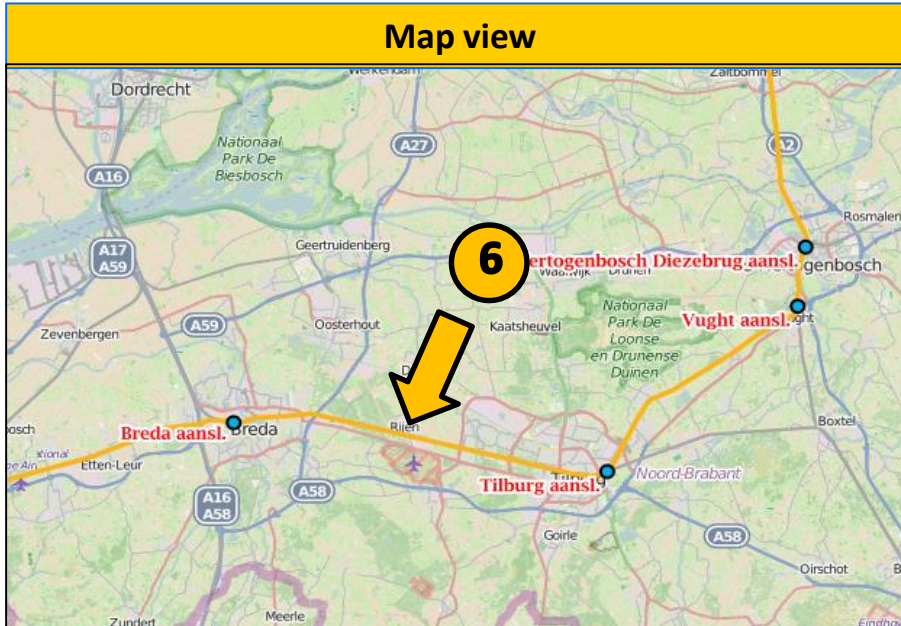
Single track operation

Total closure

January							February							March							April							
kw	Mo	Di	Mi	Do	Fr	Sa	kw	Mo	Di	Mi	Do	Fr	Sa	kw	Mo	Di	Mi	Do	Fr	Sa	kw	Mo	Di	Mi	Do	Fr	Sa	
1			1	2	3	4	5					1	2	9						1	14			1	2	3	4	
2	6	7	8	9	10	11	6	3	4	5	6	7	8	10	2	3	4	5	6	7	8	15	6	7	8	9	10	11
3	13	14	15	16	17	18	7	10	11	12	13	14	15	11	9	10	11	12	13	14	15	16	13	14	15	16	17	18
4	20	21	22	23	24	25	8	17	18	19	20	21	22	12	16	17	18	19	20	21	22	17	20	21	22	23	24	25
5	27	28	29	30	31		9	24	25	26	27	28	29	13	23	24	25	26	27	28	29	18	27	28	29	30		
														14	30	31												
May							June							July							August							
kw	Mo	Di	Mi	Do	Fr	Sa	kw	Mo	Di	Mi	Do	Fr	Sa	kw	Mo	Di	Mi	Do	Fr	Sa	kw	Mo	Di	Mi	Do	Fr	Sa	
18					1	2	23	1	2	3	4	5	27			1	2	3	4	31						1		
19	4	5	6	7	8	9	24	8	9	10	11	12	13	28	6	7	8	9	10	11	12	32	3	4	5	6	7	8
20	11	12	13	14	15	16	25	15	16	17	18	19	20	29	13	14	15	16	17	18	19	33	10	11	12	13	14	15
21	18	19	20	21	22	23	26	22	23	24	25	26	27	30	20	21	22	23	24	25	26	34	17	18	19	20	21	22
22	25	26	27	28	29	30	27	29	30					31	27	28	29	30	31			35	24	25	26	27	28	29
																						36	31					
September							Oktober							November							December							
kw	Mo	Di	Mi	Do	Fr	Sa	kw	Mo	Di	Mi	Do	Fr	Sa	kw	Mo	Di	Mi	Do	Fr	Sa	kw	Mo	Di	Mi	Do	Fr	Sa	
36		1	2	3	4	5	40			1	2	3	4	44						1	48			1	2	3	4	
37	7	8	9	10	11	12	41	5	6	7	8	9	10	45	2	3	4	5	6	7	8	49	7	8	9	10	11	12
38	14	15	16	17	18	19	42	12	13	14	15	16	17	46	9	10	11	12	13	14	15	50	14	15	16	17	18	19
39	21	22	23	24	25	26	43	19	20	21	22	23	24	47	16	17	18	19	20	21	22	51	21	22	23	24	25	26
40	28	29	30				44	26	27	28	29	30	31	48	23	24	25	26	27	28	29	52	28	29	30	31		
														49	30							53						

# Impact of TCR TT 2020 at ProRail

## Roosendaal – Bad Bentheim



### Impact on International Rail Freight

- percentage of rerouting or cancellation: 100% rerouting (TLC)
- extra running time for freight trains: up to 180 minutes
- deviation: Roosendaal – Kijfhoek – Rotterdam - Amersfoort
- timetable: annual TT
- Restrictions in train parameters: not applicable
- Restriction in container profiles: no
- In combination with limited capacity on the deviation route due to other works

### Major Capacity Restriction

Location: Breda - Tilburg

Type:

Total closure

- Works: renewal of switches
- Duration: 76 hours Continuous during Pentecost

### Locations: Breda - Tilburg

Works: switch renewal

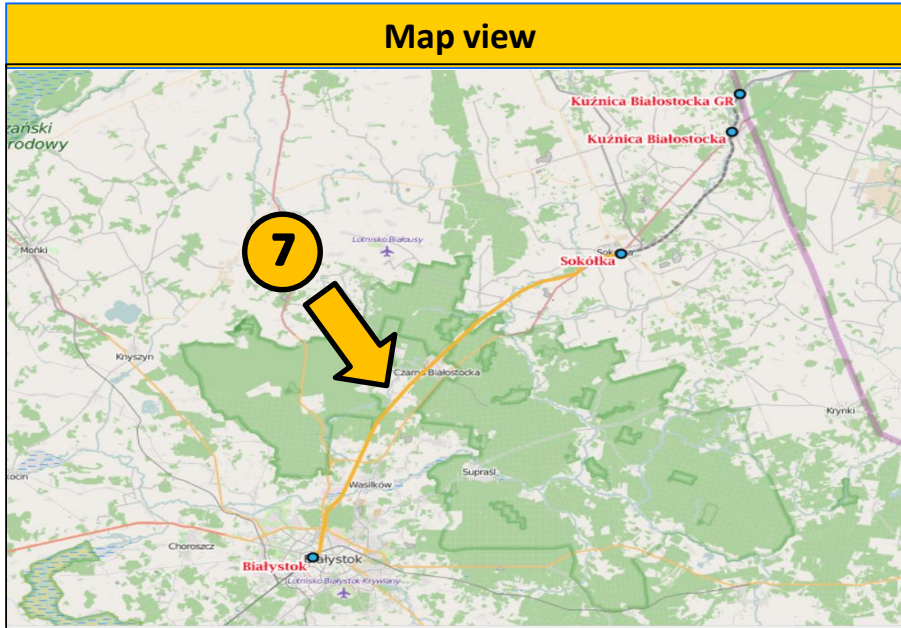
Single track operation (Yellow) Total closure (Red)

January							February							March							April						
KW	Mo	Di	Mi	Do	Fr	Sa	KW	Mo	Di	Mi	Do	Fr	Sa	KW	Mo	Di	Mi	Do	Fr	Sa	KW	Mo	Di	Mi	Do	Fr	Sa
1			1	2	3	4	5					1	2	9						1	14			1	2	3	4
2	6	7	8	9	10	11	6	3	4	5	6	7	8	10	2	3	4	5	6	7	15	6	7	8	9	10	11
3	13	14	15	16	17	18	7	10	11	12	13	14	15	11	9	10	11	12	13	14	16	13	14	15	16	17	18
4	20	21	22	23	24	25	8	17	18	19	20	21	22	12	16	17	18	19	20	21	17	20	21	22	23	24	25
5	27	28	29	30	31		9	24	25	26	27	28	29	13	23	24	25	26	27	28	18	27	28	29	30		
							10							14	30	31											
May							June							July							August						
KW	Mo	Di	Mi	Do	Fr	Sa	KW	Mo	Di	Mi	Do	Fr	Sa	KW	Mo	Di	Mi	Do	Fr	Sa	KW	Mo	Di	Mi	Do	Fr	Sa
18					1	2	23	1	2	3	4	5	27						1	31						1	
19	4	5	6	7	8	9	24	8	9	10	11	12	28	6	7	8	9	10	11	32	3	4	5	6	7	8	
20	11	12	13	14	15	16	25	15	16	17	18	19	29	13	14	15	16	17	18	33	10	11	12	13	14	15	
21	18	19	20	21	22	23	26	22	23	24	25	26	30	20	21	22	23	24	25	34	17	18	19	20	21	22	
22	25	26	27	28	29	30	27	29	30				31	27	28	29	30	31		35	24	25	26	27	28	29	
																				36	31						
September							Oktober							November							December						
KW	Mo	Di	Mi	Do	Fr	Sa	KW	Mo	Di	Mi	Do	Fr	Sa	KW	Mo	Di	Mi	Do	Fr	Sa	KW	Mo	Di	Mi	Do	Fr	Sa
36		1	2	3	4	5	40			1	2	3	4	44						1	48			1	2	3	4
37	7	8	9	10	11	12	41	5	6	7	8	9	10	45	2	3	4	5	6	7	49	7	8	9	10	11	12
38	14	15	16	17	18	19	42	12	13	14	15	16	17	46	9	10	11	12	13	14	50	14	15	16	17	18	19
39	21	22	23	24	25	26	43	19	20	21	22	23	24	47	16	17	18	19	20	21	51	21	22	23	24	25	26
40	28	29	30				44	26	27	28	29	30	31	48	23	24	25	26	27	28	52	28	29	30	31		
													49	30													



# Impact of TCR TT 2020 at PKP PLK

## Section Warszawa - Trakiszki



Map view

### Major Capacity Restriction

Location: Białystok – Wasilków, Wasilków – Czarna Białostocka, Machnacz - Geniusze

Type:

- Total Line Closure (TLC) (see calendar)
- Renewal Works: Track & Rail
- Duration: Continuous (see calendar)

### Impact on International Rail Freight

- percentage of rerouting or cancellation: 100% rerouting (TLC)
- extra running time for freight trains: tbd
- deviation: via Efk - Suwałki
- timetable: TT 2020
- no restrictions in train parameters

### Section Warszawa - Trakiszki

Works: Renewal

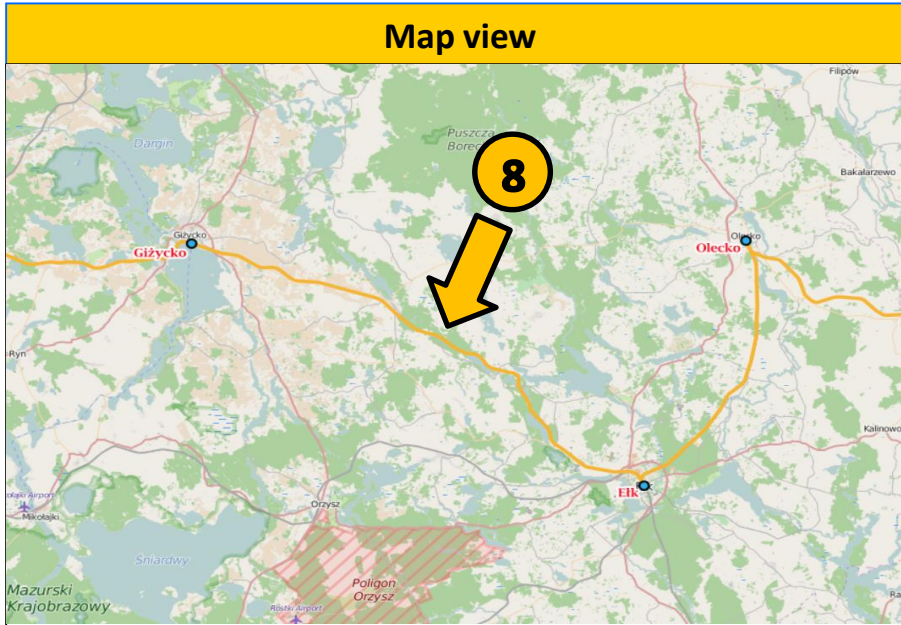
Single track operation

Total closure

January							February							March							April														
kw	Mo	Di	Mi	Do	Fr	Sa	kw	Mo	Di	Mi	Do	Fr	Sa	So	kw	Mo	Di	Mi	Do	Fr	Sa	So	kw	Mo	Di	Mi	Do	Fr	Sa	So					
1				1	2	3	5								9							1						14							
2	6	7	8	9	10	11	6	3	4	5	6	7	8	9	10	2	3	4	5	6	7	8	15	6	7	8	9	10	11	12					
3	13	14	15	16	17	18	7	10	11	12	13	14	15	16	11	9	10	11	12	13	14	15	16	13	14	15	16	17	18	19					
4	20	21	22	23	24	25	8	17	18	19	20	21	22	23	12	16	17	18	19	20	21	22	17	20	21	22	23	24	25	26					
5	27	28	29	30	31		9	24	25	26	27	28	29		13	23	24	25	26	27	28	29	18	27	28	29	30								
															14																				
May							June							July							August														
kw	Mo	Di	Mi	Do	Fr	Sa	kw	Mo	Di	Mi	Do	Fr	Sa	So	kw	Mo	Di	Mi	Do	Fr	Sa	So	kw	Mo	Di	Mi	Do	Fr	Sa	So					
18							23	1	2	3	4	5	6	7	27	1	2	3	4	5			31												
19	3	4	5	6	7	8	24	8	9	10	11	12	13	14	28	6	7	8	9	10	11	12	32	3	4	5	6	7	8	9					
20	11	12	13	14	15	16	25	15	16	17	18	19	20	21	29	13	14	15	16	17	18	19	33	10	11	12	13	14	15	16					
21	18	19	20	21	22	23	26	22	23	24	25	26	27	28	30	20	21	22	23	24	25	26	34	17	18	19	20	21	22	23					
22	25	26	27	28	29	30	27	29	30						31	27	28	29	30	31			35	24	25	26	27	28	29	30					
																							36												
September							Oktober							November							December														
kw	Mo	Di	Mi	Do	Fr	Sa	kw	Mo	Di	Mi	Do	Fr	Sa	So	kw	Mo	Di	Mi	Do	Fr	Sa	So	kw	Mo	Di	Mi	Do	Fr	Sa	So					
36							40								44								48												
37	7	8	9	10	11	12	41	5	6	7	8	9	10	11	45	2	3	4	5	6	7	8	49	7	8	9	10	11	12	13					
38	14	15	16	17	18	19	42	12	13	14	15	16	17	18	46	9	10	11	12	13	14	15	50	14	15	16	17	18	19	20					
39	21	22	23	24	25	26	43	19	20	21	22	23	24	25	47	16	17	18	19	20	21	22	51	21	22	23	24	25	26	27					
40	28	29	30				44	26	27	28	29	30	31		48	23	24	25	26	27	28	29	52	28	29	30	31								
															49	30																			

# Impact of TCR TT 2020 at PKP PLK

## Section Poznań - Ełk



Map view

### Major Capacity Restriction

Location: Ełk - Giżycko

Type:

- Total Line Closure (TLC) (see calendar)
- Renewal Works: Track & Rail, Catenary, Telecommunications, Signalling
- Duration: Continuous (see calendar)

### Impact on International Rail Freight

- percentage of rerouting or cancellation: 100% rerouting (TLC)
- extra running time for freight trains: tbd
- deviation: via Olsztyn – Szczytno - Ełk
- timetable: TT 2020 - 2021
- no restrictions in train parameters

### Section Poznań - Ełk

Works: Renewal

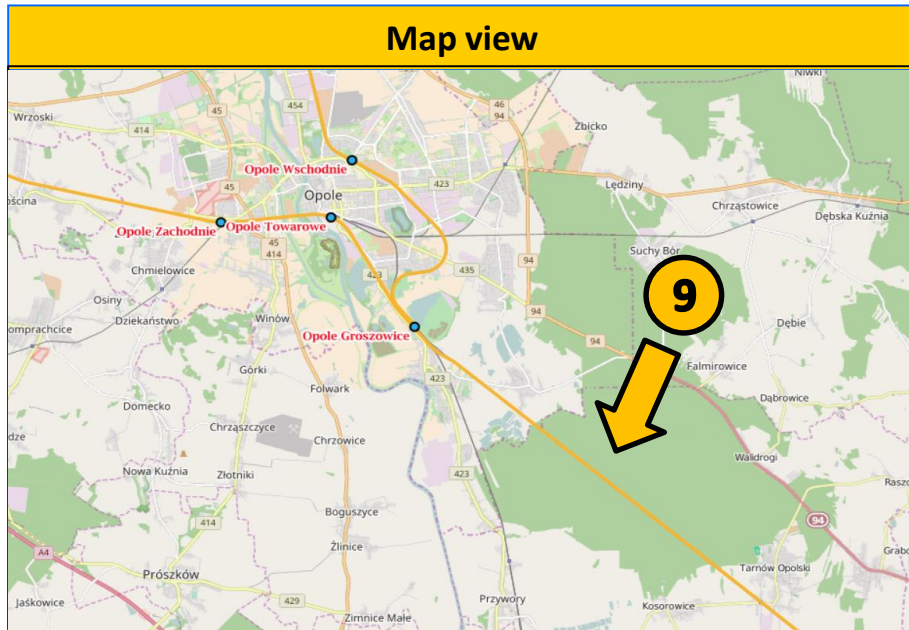
Single track operation

Total closure

January							February							March							April						
KW	Mo	Di	Mi	Do	Fr	Sa	KW	Mo	Di	Mi	Do	Fr	Sa	KW	Mo	Di	Mi	Do	Fr	Sa	KW	Mo	Di	Mi	Do	Fr	Sa
1			1	2	3	4	5					1	2	3						1	4			1	2	3	4
2	6	7	8	9	10	11	6	3	4	5	6	7	8	10	2	3	4	5	6	7	15	6	7	8	9	10	11
3	13	14	15	16	17	18	7	10	11	12	13	14	15	11	9	10	11	12	13	14	16	13	14	15	16	17	18
4	20	21	22	23	24	25	8	17	18	19	20	21	22	12	16	17	18	19	20	21	17	20	21	22	23	24	25
5	27	28	29	30	31		9	24	25	26	27	28	29	13	23	24	25	26	27	28	18	27	28	29	30		
														14	30	31											
May							June							July							August						
KW	Mo	Di	Mi	Do	Fr	Sa	KW	Mo	Di	Mi	Do	Fr	Sa	KW	Mo	Di	Mi	Do	Fr	Sa	KW	Mo	Di	Mi	Do	Fr	Sa
18							23	1	2	3	4	5	6	27	1	2	3	4	5	31						1	
19	4	5	6	7	8	9	24	8	9	10	11	12	13	28	6	7	8	9	10	11	32	3	4	5	6	7	8
20	11	12	13	14	15	16	25	15	16	17	18	19	20	29	13	14	15	16	17	18	33	10	11	12	13	14	15
21	18	19	20	21	22	23	26	22	23	24	25	26	27	30	20	21	22	23	24	25	34	17	18	19	20	21	22
22	25	26	27	28	29	30	27	29	30					31	27	28	29	30	31	35	24	25	26	27	28	29	
																					36	31					
September							Oktober							November							December						
KW	Mo	Di	Mi	Do	Fr	Sa	KW	Mo	Di	Mi	Do	Fr	Sa	KW	Mo	Di	Mi	Do	Fr	Sa	KW	Mo	Di	Mi	Do	Fr	Sa
36							40					1	2	44						1	48						
37	7	8	9	10	11	12	41	5	6	7	8	9	10	45	2	3	4	5	6	7	50	7	8	9	10	11	12
38	14	15	16	17	18	19	42	12	13	14	15	16	17	46	9	10	11	12	13	14	51	14	15	16	17	18	19
39	21	22	23	24	25	26	43	19	20	21	22	23	24	47	16	17	18	19	20	21	52	21	22	23	24	25	26
40	28	29	30				44	26	27	28	29	30	31	48	23	24	25	26	27	28	53	28	29	30	31		
														49	30												

# Impact of TCR TT 2020 at PKP PLK

## Section Wrocław - Katowice



### Major Capacity Restriction

Location: Tarnów Opolski - Opole

Type:

- Single Track Traffic (see calendar)
- Modernization Works: Track & Rail
- Duration: Continuous (see calendar)

### Impact on International Rail Freight

- limited capacity
- single track traffic
- speed restrictions
- timetable: TT 2020
- no restrictions in train parameters

### Section Wrocław - Katowice

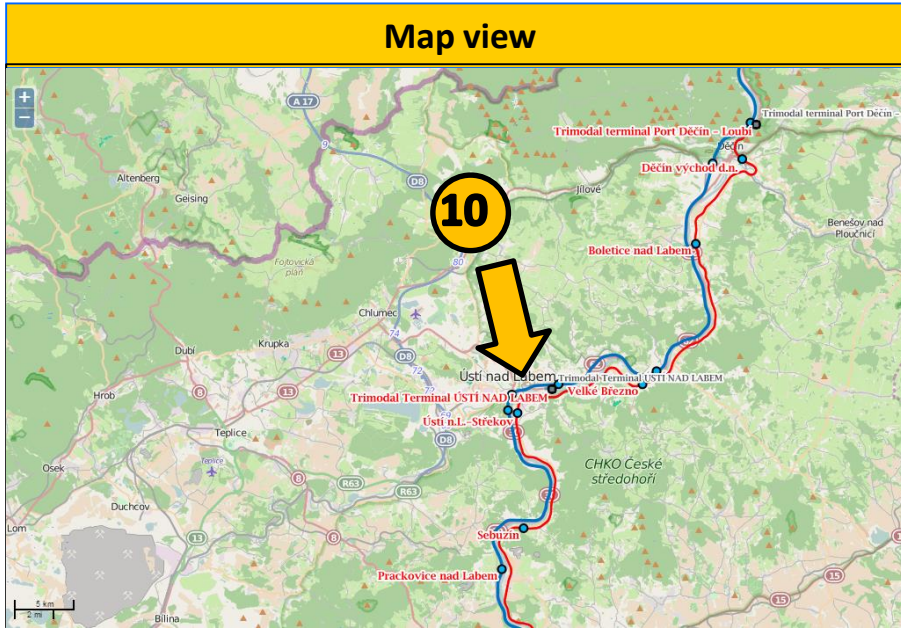
Works: Modernization

Single track operation
  Total closure

January							February							March							April						
KW	Mo	Di	Mi	Do	Fr	Sa	KW	Mo	Di	Mi	Do	Fr	Sa	KW	Mo	Di	Mi	Do	Fr	Sa	KW	Mo	Di	Mi	Do	Fr	Sa
1			1	2	3	4	5					1	2	9						1	14			1	2	3	4
2	6	7	8	9	10	11	8	3	4	5	6	7	8	10	2	3	4	5	6	7	15	6	7	8	9	10	11
3	13	14	15	16	17	18	7	10	11	12	13	14	15	11	9	10	11	12	13	14	16	13	14	15	16	17	18
4	20	21	22	23	24	25	8	17	18	19	20	21	22	12	16	17	18	19	20	21	17	20	21	22	23	24	25
5	27	28	29	30	31		9	24	25	26	27	28	29	13	23	24	25	26	27	28	18	27	28	29	30		
														14	30	31											
May							June							July							August						
KW	Mo	Di	Mi	Do	Fr	Sa	KW	Mo	Di	Mi	Do	Fr	Sa	KW	Mo	Di	Mi	Do	Fr	Sa	KW	Mo	Di	Mi	Do	Fr	Sa
18					1	2	23	1	2	3	4	5	27	1	2	3	4	5	31					1	2		
19	4	5	6	7	8	9	24	8	9	10	11	12	28	6	7	8	9	10	32	3	4	5	6	7	8		
20	11	12	13	14	15	16	25	15	16	17	18	19	29	13	14	15	16	17	33	10	11	12	13	14	15		
21	18	19	20	21	22	23	26	22	23	24	25	26	30	20	21	22	23	24	34	17	18	19	20	21	22		
22	25	26	27	28	29	30	27	29	30				31	27	28	29	30	31	35	24	25	26	27	28	29		
																			36	31							
September							Oktober							November							December						
KW	Mo	Di	Mi	Do	Fr	Sa	KW	Mo	Di	Mi	Do	Fr	Sa	KW	Mo	Di	Mi	Do	Fr	Sa	KW	Mo	Di	Mi	Do	Fr	Sa
36	1	2	3	4	5	6	40				1	2	44					1	48						1		
37	7	8	9	10	11	12	41	5	6	7	8	9	45	2	3	4	5	6	7	49	7	8	9	10	11	12	
38	14	15	16	17	18	19	42	12	13	14	15	16	46	9	10	11	12	13	14	50	14	15	16	17	18	19	
39	21	22	23	24	25	26	43	19	20	21	22	23	47	16	17	18	19	20	21	51	21	22	23	24	25	26	
40	28	29	30				44	26	27	28	29	30	48	23	24	25	26	27	28	52	28	29	30	31			
													49	30						53	28	29	30	31			

# Impact of TCR TT 2020 at SŽDC

## Praha – Bad Schandau



Map view

### Major Capacity Restriction

Location: Decin hl. n. - Povrly  
 Type: Single track operation  
 Works: Maintenance of rocks  
 Duration: 5 hours during daytime, total: 14 days

### Impact on International Rail Freight

- Expectation of delays or deviation via diversionary line.
- Extra running time for freight trains: up to 30 minutes
- Restrictions in train parameters: not applicable
- Restriction in container profiles: no

### Locations: Decin hl. n. - Povrly

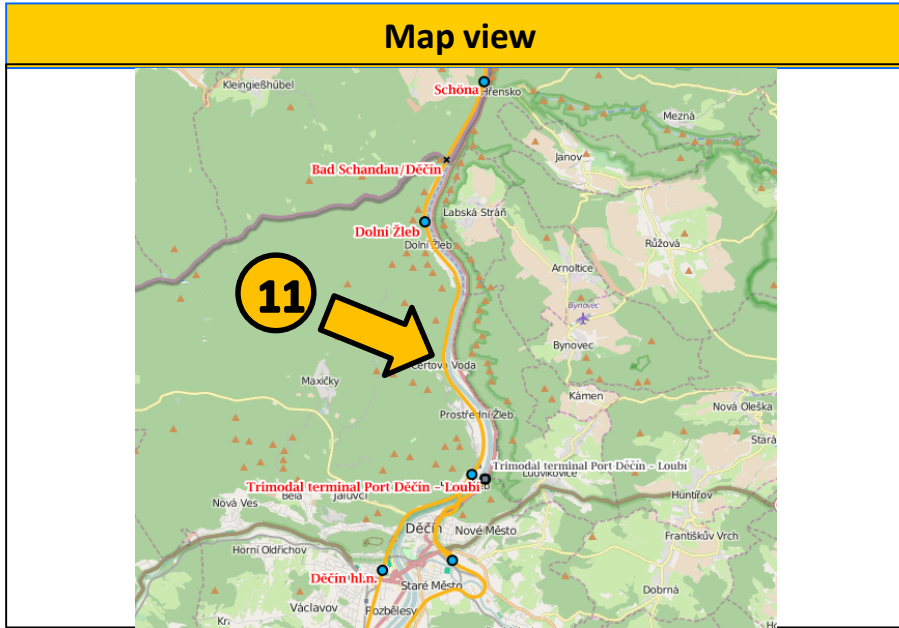
Works: Maintenance of rocks

■ Single track operation ■ Total closure

January							February							March							April								
KW	Mo	Di	Mi	Do	Fr	Sa	KW	Mo	Di	Mi	Do	Fr	Sa	KW	Mo	Di	Mi	Do	Fr	Sa	KW	Mo	Di	Mi	Do	Fr	Sa		
1			1	2	3	4	5					1	2	9						1	14			1	2	3	4		
2	6	7	8	9	10	11	6	3	4	5	6	7	8	10	2	3	4	5	6	7	8	15	6	7	8	9	10	11	
3	13	14	15	16	17	18	7	10	11	12	13	14	15	11	9	10	11	12	13	14	15	16	13	14	15	16	17	18	
4	20	21	22	23	24	25	8	17	18	19	20	21	22	12	16	17	18	19	20	21	22	17	20	21	22	23	24	25	
5	27	28	29	30	31		9	24	25	26	27	28	29	13	23	24	25	26	27	28	29	18	27	28	29	30			
														14	30	31													
May							June							July							August								
KW	Mo	Di	Mi	Do	Fr	Sa	KW	Mo	Di	Mi	Do	Fr	Sa	KW	Mo	Di	Mi	Do	Fr	Sa	KW	Mo	Di	Mi	Do	Fr	Sa		
18					1	2	23	1	2	3	4	5	6	27						1	31						1		
19	4	5	6	7	8	9	24	8	9	10	11	12	13	28	6	7	8	9	10	11	12	32	3	4	5	6	7	8	
20	11	12	13	14	15	16	25	15	16	17	18	19	20	21	29	13	14	15	16	17	18	19	33	10	11	12	13	14	15
21	18	19	20	21	22	23	26	22	23	24	25	26	27	28	30	20	21	22	23	24	25	26	34	17	18	19	20	21	22
22	25	26	27	28	29	30	27	29	30					31	27	28	29	30	31			35	24	25	26	27	28	29	
																						36	31						
September							October							November							December								
KW	Mo	Di	Mi	Do	Fr	Sa	KW	Mo	Di	Mi	Do	Fr	Sa	KW	Mo	Di	Mi	Do	Fr	Sa	KW	Mo	Di	Mi	Do	Fr	Sa		
36		1	2	3	4	5	40			1	2	3	4	44						1	49		1	2	3	4	5		
37	7	8	9	10	11	12	41	5	6	7	8	9	10	11	45	2	3	4	5	6	7	8	50	7	8	9	10	11	12
38	14	15	16	17	18	19	42	12	13	14	15	16	17	18	46	9	10	11	12	13	14	15	51	14	15	16	17	18	19
39	21	22	23	24	25	26	43	19	20	21	22	23	24	25	47	16	17	18	19	20	21	22	52	21	22	23	24	25	26
40	28	29	30				44	26	27	28	29	30	31	48	23	24	25	26	27	28	29	53	28	29	30	31			
														49	30														

# Impact of TCR TT 2020 at SŽDC

## Praha – Bad Schandau



Map view

### Major Capacity Restriction

Location: Dolní Žleb – Děčín-Prostřední Žleb  
 Type: Single track operation  
 Works: Maintenance of track and bridge  
 Duration: 120 days

### Impact on International Rail Freight

- Expectation of delays or deviation via diversionary line.
- Extra running time for freight trains: up to 120 minutes
- Restrictions in train parameters: not applicable
- Restriction in container profiles: no

### Locations: Decin hl. n. - Povrly

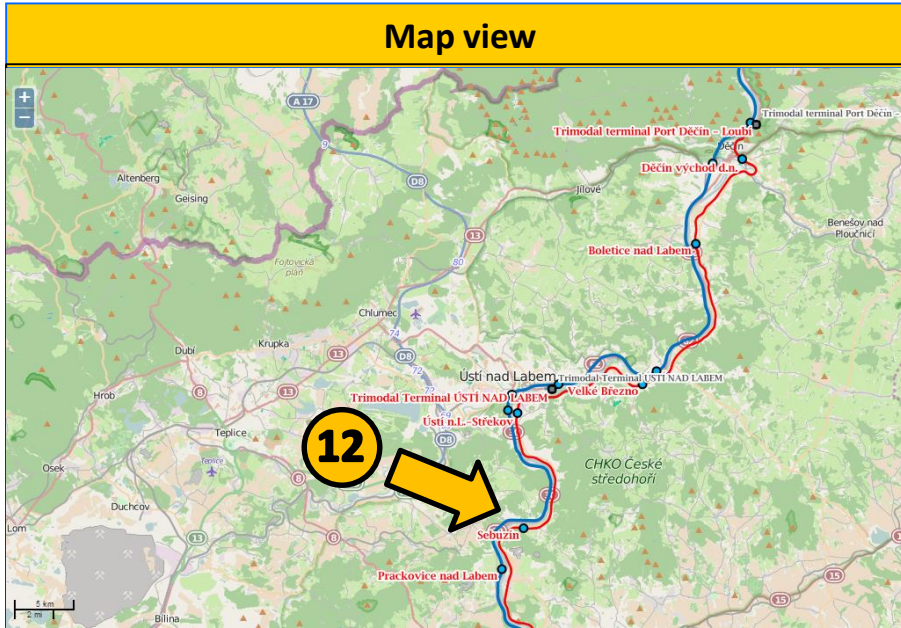
Works: Maintenance of rocks

Single track operation (Yellow) Total closure (Red)

January							February							March							April						
KW	Mo	Tu	We	Th	Fr	Sa	KW	Mo	Tu	We	Th	Fr	Sa	KW	Mo	Tu	We	Th	Fr	Sa	KW	Mo	Tu	We	Th	Fr	Sa
1			1	2	3	4	5					1	9					1	14						1		
2	6	7	8	9	10	11	6	3	4	5	6	7	10	2	3	4	5	6	15	6	7	8	9	10	11		
3	13	14	15	16	17	18	7	10	11	12	13	14	11	9	10	11	12	13	16	13	14	15	16	17	18		
4	20	21	22	23	24	25	8	17	18	19	20	21	12	16	17	18	19	20	17	20	21	22	23	24	25		
5	27	28	29	30	31		9	24	25	26	27	28	13	23	24	25	26	27	18	27	28	29	30				
													14	30	31												
May							June							July							August						
KW	Mo	Tu	We	Th	Fr	Sa	KW	Mo	Tu	We	Th	Fr	Sa	KW	Mo	Tu	We	Th	Fr	Sa	KW	Mo	Tu	We	Th	Fr	Sa
18					1	2	23	1	2	3	4	5	27			1	2	3	31						1		
19	4	5	6	7	8	9	24	8	9	10	11	12	28	6	7	8	9	10	32	3	4	5	6	7	8		
20	11	12	13	14	15	16	25	15	16	17	18	19	29	13	14	15	16	17	33	10	11	12	13	14	15		
21	18	19	20	21	22	23	26	22	23	24	25	26	30	20	21	22	23	24	34	17	18	19	20	21	22		
22	25	26	27	28	29	30	27	29	30				31	27	28	29	30	31	35	24	25	26	27	28	29		
																			36	31					1		
September							Oktober							November							December						
KW	Mo	Tu	We	Th	Fr	Sa	KW	Mo	Tu	We	Th	Fr	Sa	KW	Mo	Tu	We	Th	Fr	Sa	KW	Mo	Tu	We	Th	Fr	Sa
36		1	2	3	4	5	40			1	2	3	44						1	49	1	2	3	4	5	6	
37	7	8	9	10	11	12	41	5	6	7	8	9	45	2	3	4	5	6	50	7	8	9	10	11	12		
38	14	15	16	17	18	19	42	12	13	14	15	16	46	9	10	11	12	13	51	14	15	16	17	18	19		
39	21	22	23	24	25	26	43	19	20	21	22	23	47	16	17	18	19	20	52	21	22	23	24	25	26		
40	28	29	30				44	26	27	28	29	30	48	23	24	25	26	27	53	28	29	30	31				
													49	30													

# Impact of TCR TT 2020 at SŽDC

## Praha – Bad Schandau



Map view

### Impact on International Rail Freight

- Expectation of delays or deviation via diversionary line.
- Extra running time for freight trains: up to 120 minutes
- Restrictions in train parameters: not applicable
- Restriction in container profiles: no

### Major Capacity Restriction

Location: Prackovice nad Labem - Lovosice  
 Type: Single track operation  
 Works: Maintenance of line (Track & Rail)  
 Duration: 120 days

### Locations: Decin hl. n. - Povrly

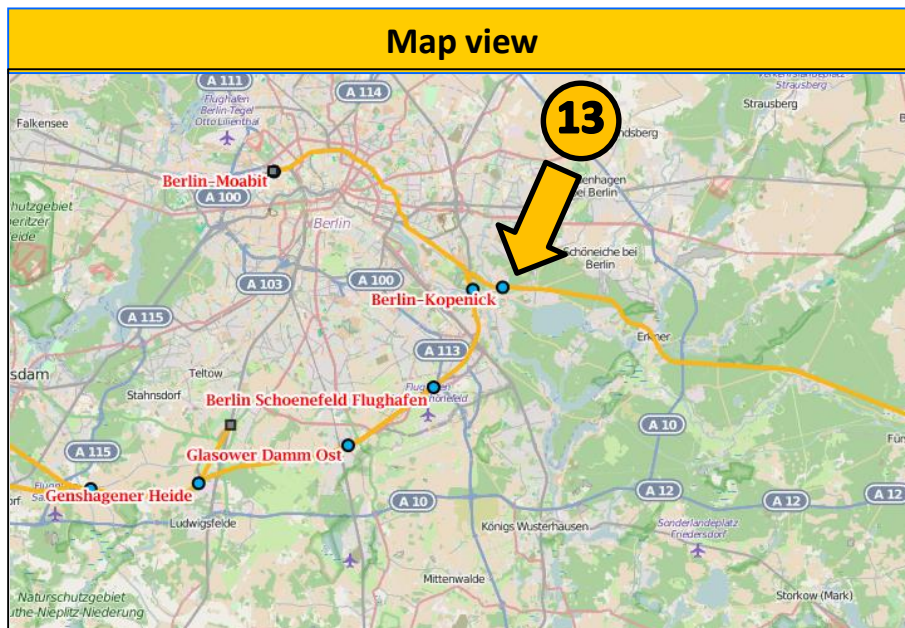
Works: Maintenance of rocks

■ Single track operation ■ Total closure

January							February							March							April										
KW	Mo	Di	Mi	Do	Fr	Sa	KW	Mo	Di	Mi	Do	Fr	Sa	KW	Mo	Di	Mi	Do	Fr	Sa	So	KW	Mo	Di	Mi	Do	Fr	Sa	So		
1			1	2	3	4	5	5					1	2	9							1	14			1	2	3	4	5	
2	6	7	8	9	10	11	12	6	3	4	5	6	7	8	9	10	2	3	4	5	6	7	8	15	6	7	8	9	10	11	12
3	13	14	15	16	17	18	19	7	10	11	12	13	14	15	16	11	9	10	11	12	13	14	15	16	13	14	15	16	17	18	19
4	20	21	22	23	24	25	26	8	17	18	19	20	21	22	23	12	16	17	18	19	20	21	22	17	20	21	22	23	24	25	26
5	27	28	29	30	31			9	24	25	26	27	28	29	13	23	24	25	26	27	28	29	18	27	28	29	30				
															14	30	31														
May							June							July							August										
KW	Mo	Di	Mi	Do	Fr	Sa	So	KW	Mo	Di	Mi	Do	Fr	Sa	So	KW	Mo	Di	Mi	Do	Fr	Sa	So	KW	Mo	Di	Mi	Do	Fr	Sa	So
18					1	2	3	23	1	2	3	4	5	6	7	27								31							
19	4	5	6	7	8	9	10	24	8	9	10	11	12	13	14	28	6	7	8	9	10	11	12	32	3	4	5	6	7	8	9
20	11	12	13	14	15	16	17	25	15	16	17	18	19	20	21	29	13	14	15	16	17	18	19	33	10	11	12	13	14	15	16
21	18	19	20	21	22	23	24	26	22	23	24	25	26	27	28	30	20	21	22	23	24	25	26	34	17	18	19	20	21	22	23
22	25	26	27	28	29	30	31	27	29	30					31	27	28	29	30	31			35	24	25	26	27	28	29	30	
																							36	31							
September							October							November							December										
KW	Mo	Di	Mi	Do	Fr	Sa	So	KW	Mo	Di	Mi	Do	Fr	Sa	So	KW	Mo	Di	Mi	Do	Fr	Sa	So	KW	Mo	Di	Mi	Do	Fr	Sa	So
36		1	2	3	4	5	6	40				1	2	3	4	44							1	48		1	2	3	4	5	6
37	7	8	9	10	11	12	13	41	5	6	7	8	9	10	11	45	2	3	4	5	6	7	8	49	7	8	9	10	11	12	13
38	14	15	16	17	18	19	20	42	12	13	14	15	16	17	18	46	9	10	11	12	13	14	15	51	14	15	16	17	18	19	20
39	21	22	23	24	25	26	27	43	19	20	21	22	23	24	25	47	16	17	18	19	20	21	22	52	21	22	23	24	25	26	27
40	28	29	30					44	26	27	28	29	30	31	48	23	24	25	26	27	28	29	53	28	29	30	31				
															49	30															

# Impact of TCR TT 2020 at DB Netz

## Berlin Rummelsburg – Berlin Fangschleuse



### Impact on International Rail Freight

- percentage of rerouting or cancellation: 100% rerouting
- extra running time for freight trains: Detailed information on extra running time is distributed by DB Netz individually for every customer for each affected train. Additionally DB Netz offers train path advice free of charge.
- deviation: via Diedersdorf-Wümsd-Waldstadt or via Eichgestell Nord-Bln-Grünau to Cottbus-Ziltendorf-Frankfurt (O)
- timetable: det. info at latest 4 month before change of TT
- Restrictions in train parameters: none by the rerouting

### Major Capacity Restriction

Location: Berlin Köpenick

Type:

Total closure

- Works: startup solid state interlocking Berlin Köpenick
- Duration: 14. – 25.04.2020

### Locations: Berlin Köpenick

Works: startup solid state interlocking

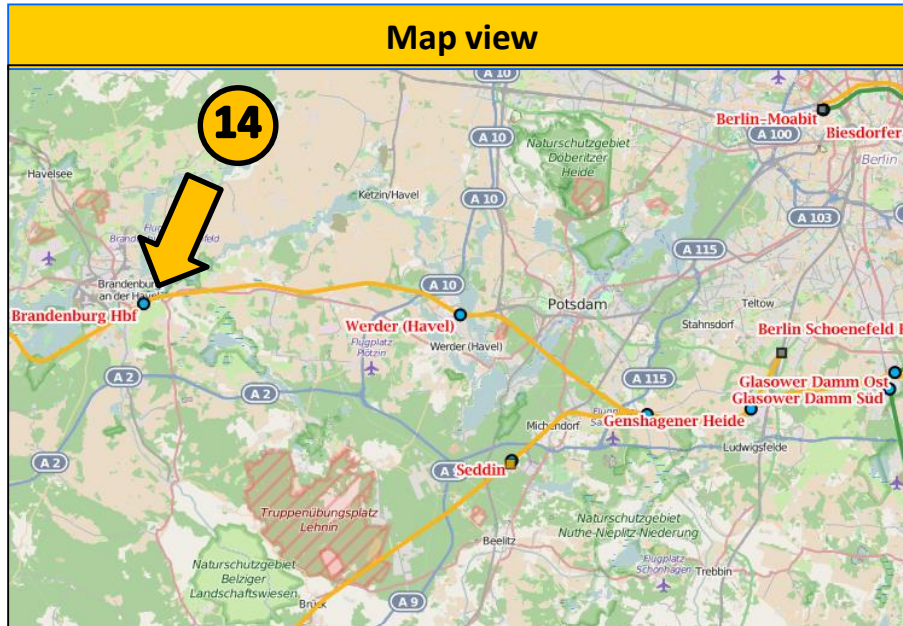
Single track operation

Total closure

January							February							March							April													
kw	Mo	Di	Mi	Do	Fr	Sa	So	kw	Mo	Di	Mi	Do	Fr	Sa	So	kw	Mo	Di	Mi	Do	Fr	Sa	So	kw	Mo	Di	Mi	Do	Fr	Sa	So			
1				1	2	3	4	5	6						1	2	3							1	14				1	2	3	4		
2	6	7	8	9	10	11	12	6	3	4	5	6	7	8	9	10	2	3	4	5	6	7	8	15	6	7	8	9	10	11				
3	13	14	15	16	17	18	19	7	10	11	12	13	14	15	16	11	9	10	11	12	13	14	15	16	13	14	15	16	17	18				
4	20	21	22	23	24	25	26	8	17	18	19	20	21	22	23	12	16	17	18	19	20	21	22	17	20	21	22	23	24	25				
5	27	28	29	30	31			9	24	25	26	27	28	29	13	23	24	25	26	27	28	29	18	27	28	29	30							
																14	30	31																
May							June							July							August													
kw	Mo	Di	Mi	Do	Fr	Sa	So	kw	Mo	Di	Mi	Do	Fr	Sa	So	kw	Mo	Di	Mi	Do	Fr	Sa	So	kw	Mo	Di	Mi	Do	Fr	Sa	So			
18						1	2	3	23	1	2	3	4	5	6	7	27				1	2	3	4	5	31							1	
19	4	5	6	7	8	9	10	24	8	9	10	11	12	13	14	28	6	7	8	9	10	11	12	32	3	4	5	6	7	8				
20	11	12	13	14	15	16	17	25	15	16	17	18	19	20	21	29	13	14	15	16	17	18	19	33	10	11	12	13	14	15				
21	18	19	20	21	22	23	24	26	22	23	24	25	26	27	28	30	20	21	22	23	24	25	26	34	17	18	19	20	21	22				
22	25	26	27	28	29	30	31	27	29	30					31	27	28	29	30	31			35	24	25	26	27	28	29					
																							36	31										
September							Oktober							November							December													
kw	Mo	Di	Mi	Do	Fr	Sa	So	kw	Mo	Di	Mi	Do	Fr	Sa	So	kw	Mo	Di	Mi	Do	Fr	Sa	So	kw	Mo	Di	Mi	Do	Fr	Sa	So			
36						1	2	3	40						1	2	3	4	44							1	48							1
37	7	8	9	10	11	12	13	41	5	6	7	8	9	10	11	45	2	3	4	5	6	7	8	49	1	2	3	4	5					
38	14	15	16	17	18	19	20	42	12	13	14	15	16	17	18	46	9	10	11	12	13	14	15	51	14	15	16	17	18	19				
39	21	22	23	24	25	26	27	43	19	20	21	22	23	24	25	47	16	17	18	19	20	21	22	52	21	22	23	24	25	26				
40	28	29	30					44	26	27	28	29	30	31	48	23	24	25	26	27	28	29	53	28	29	30	31							
															49	30																		

# Impact of TCR TT 2020 at DB Netz

## Burg (nearby Brandenburg) – Werder (Havel)



Map view

### Impact on International Rail Freight

- percentage of rerouting or cancellation: 0% rerouting or cancellation (altering single tracks are closed)
- extra running time for freight trains: up to 30 min
- deviation: not all tracks can be used at the station
- timetable: detailed information is available at latest 4 months before change of TT
- Restrictions in train parameters: none
- Restriction in container profiles: none

### Major Capacity Restriction

Location: Brandenburg central station

Type: single track closure (alternating, also continuous main track)

- Works: restoration of track roof
- Duration: 5.04 – 10.08.2020

#### Locations: Brandenburg Hbf

Works: restoration of trackroofs

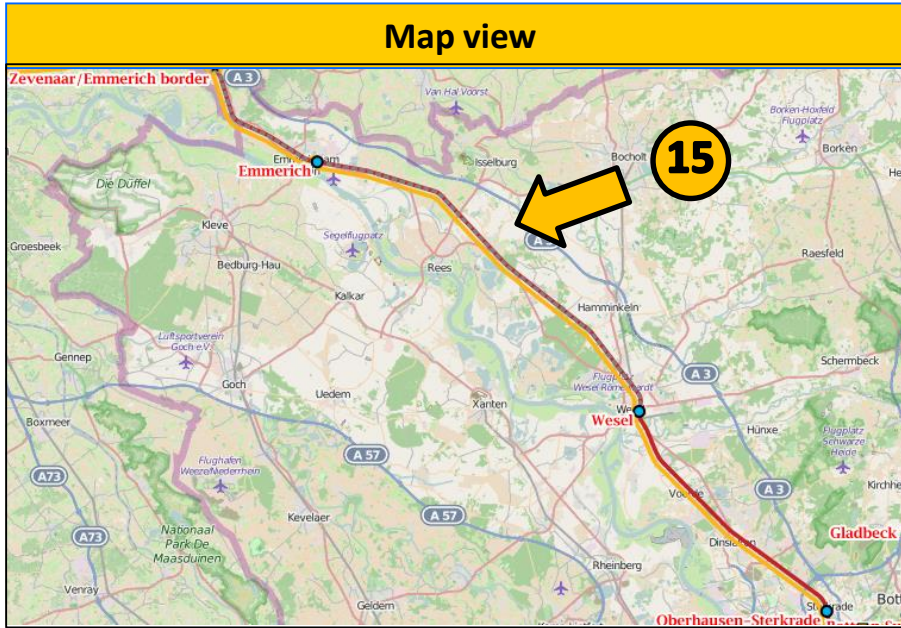
Single track operation (Yellow) Total closure (Red)

January							February							March							April								
KW	Mo	Di	Mi	Do	Fr	Sa	KW	Mo	Di	Mi	Do	Fr	Sa	KW	Mo	Di	Mi	Do	Fr	Sa	KW	Mo	Di	Mi	Do	Fr	Sa		
1			1	2	3	4	6					1	2	8						1	14			1	2	3	4		
2	6	7	8	9	10	11	6	3	4	5	6	7	8	9	10	2	3	4	5	6	7	8	15	6	7	8	9	10	11
3	13	14	15	16	17	18	7	10	11	12	13	14	15	16	11	9	10	11	12	13	14	15	16	13	14	15	16	17	18
4	20	21	22	23	24	25	8	17	18	19	20	21	22	23	12	16	17	18	19	20	21	22	17	20	21	22	23	24	25
5	27	28	29	30	31		9	24	25	26	27	28	29	13	23	24	25	26	27	28	29	18	27	28	29	30			
														14	30	31													
May							June							July							August								
KW	Mo	Di	Mi	Do	Fr	Sa	KW	Mo	Di	Mi	Do	Fr	Sa	KW	Mo	Di	Mi	Do	Fr	Sa	KW	Mo	Di	Mi	Do	Fr	Sa		
18					1	2	23	1	2	3	4	5	6	7	27			1	2	3	4	5	31						1
19	4	5	6	7	8	9	24	8	9	10	11	12	13	14	28	6	7	8	9	10	11	12	32	3	4	5	6	7	8
20	11	12	13	14	15	16	25	15	16	17	18	19	20	21	29	13	14	15	16	17	18	19	33	10	11	12	13	14	15
21	18	19	20	21	22	23	26	22	23	24	25	26	27	28	30	20	21	22	23	24	25	26	34	17	18	19	20	21	22
22	25	26	27	28	29	30	27	29	30					31	27	28	29	30	31		35	24	25	26	27	28	29		
																					36	31							
September							Oktober							November							December								
KW	Mo	Di	Mi	Do	Fr	Sa	KW	Mo	Di	Mi	Do	Fr	Sa	KW	Mo	Di	Mi	Do	Fr	Sa	KW	Mo	Di	Mi	Do	Fr	Sa		
36		1	2	3	4	5	40				1	2	3	4	44						1	48			1	2	3	4	5
37	7	8	9	10	11	12	41	5	6	7	8	9	10	11	45	2	3	4	5	6	7	8	49	7	8	9	10	11	12
38	14	15	16	17	18	19	42	12	13	14	15	16	17	18	46	9	10	11	12	13	14	15	51	14	15	16	17	18	19
39	21	22	23	24	25	26	43	19	20	21	22	23	24	25	47	16	17	18	19	20	21	22	52	21	22	23	24	25	26
40	28	29	30				44	26	27	28	29	30	31	48	23	24	25	26	27	28	29	53	28	29	30	31			
														49	30														



# Impact of TCR TT 2020 at DB Netz

## Oberhausen – Emmerich Grenze



### Impact on International Rail Freight

- percentage of rerouting or cancellation: 60% rerouting
- extra running time for freight trains: in case of bidirectional traffic: 15 trains/h +30 min; in case of total closure: individual rerouting
- deviation: via Köln West-Rommerskirchen-Rheydt-Viersen to Venlo or Oberhausen-Meerbeck-Viersen to Venlo  
some more variants, depending on the construction phase
- timetable: det. info at latest 4 month before change of TT
- Restrictions in train parameters: none

### Major Capacity Restriction

Location: Oberhausen – Emmerich Grenze

Type:

Bidirectional traffic, total closure

- Works: construction works at overhead contact line, some retaining walls and bridge crossings
- Duration: 15.12.19 – 07.12.2020

### Locations: Oberhausen - Emmerich Grenze

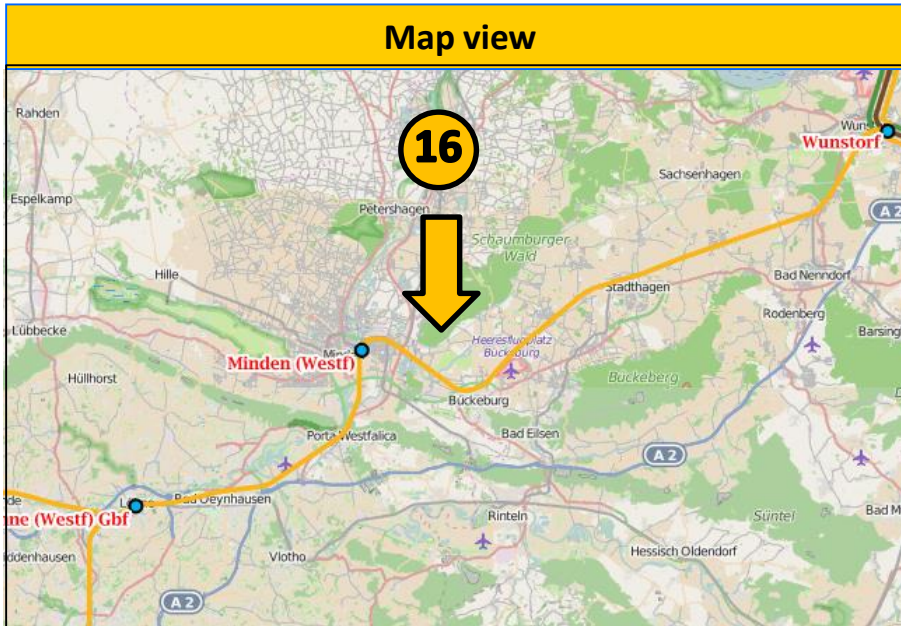
Works: overhead contact line, retaining walls, bridge crossings

Single track operation
  Total closure

January							February							March							April								
kw	Mo	Di	Mi	Do	Fr	Sa	kw	Mo	Di	Mi	Do	Fr	Sa	So	kw	Mo	Di	Mi	Do	Fr	Sa	So	kw	Mo	Di	Mi	Do	Fr	Sa
1			1	2	3	4	6						1	2	8							1	14			1	2	3	4
2	6	7	8	9	10	11	3	4	5	6	7	8	9	10	2	3	4	5	6	7	8	15	6	7	8	9	10	11	
3	13	14	15	16	17	18	7	10	11	12	13	14	15	16	11	9	10	11	12	13	14	15	16	13	14	15	16	17	18
4	20	21	22	23	24	25	8	17	18	19	20	21	22	23	12	16	17	18	19	20	21	22	17	20	21	22	23	24	25
5	27	28	29	30	31		9	24	25	26	27	28	29		13	23	24	25	26	27	28	29	18	27	28	29	30		
															14	30	31												
May							June							July							August								
kw	Mo	Di	Mi	Do	Fr	Sa	kw	Mo	Di	Mi	Do	Fr	Sa	So	kw	Mo	Di	Mi	Do	Fr	Sa	So	kw	Mo	Di	Mi	Do	Fr	Sa
18					1	2	23	1	2	3	4	5	6	7	27			1	2	3	4	5	31						1
19	4	5	6	7	8	9	24	8	9	10	11	12	13	14	28	6	7	8	9	10	11	12	32	3	4	5	6	7	8
20	11	12	13	14	15	16	25	15	16	17	18	19	20	21	29	13	14	15	16	17	18	19	33	10	11	12	13	14	15
21	18	19	20	21	22	23	26	22	23	24	25	26	27	28	30	20	21	22	23	24	25	26	34	17	18	19	20	21	22
22	25	26	27	28	29	30	27	29	30						31	27	28	29	30	31			35	24	25	26	27	28	29
																							36	31					
September							Oktober							November							December								
kw	Mo	Di	Mi	Do	Fr	Sa	kw	Mo	Di	Mi	Do	Fr	Sa	So	kw	Mo	Di	Mi	Do	Fr	Sa	So	kw	Mo	Di	Mi	Do	Fr	Sa
36		1	2	3	4	5	40			1	2	3	4	44						1	48			1	2	3	4	5	
37	7	8	9	10	11	12	41	5	6	7	8	9	10	11	45	2	3	4	5	6	7	8	49	7	8	9	10	11	12
38	14	15	16	17	18	19	42	12	13	14	15	16	17	18	46	9	10	11	12	13	14	15	51	14	15	16	17	18	19
39	21	22	23	24	25	26	43	19	20	21	22	23	24	25	47	16	17	18	19	20	21	22	52	21	22	23	24	25	26
40	28	29	30				44	26	27	28	29	30	31	48	23	24	25	26	27	28	29	53	28	29	30	31			
															49	30													

# Impact of TCR TT 2020 at DB Netz

## Bückeburg – Minden Gbf



Map view

### Impact on International Rail Freight

- percentage of rerouting or cancellation: 47% rerouting, 3% cancellation
- extra running time for freight trains: Detailed information on extra running time is distributed by DB Netz individually for every customer for each affected train. Additionally DB Netz offers train path advice free of charge
- deviation: Lehrte Wgr/Seelze Rbf-Himmighausen-Paderborn-Hamm Rbf, some more parallel rerouting to split the traffic
- timetable: det. info. at latest 4 month before change of TT

### Major Capacity Restriction

Location: Bückeburg - Minden

Type:

Total closure at night

Single track operation at daytime

- Works: bridge construction works
- Duration: 28.02. – 16.03.2020

### Locations: Bückeburg - Minden

Works: bridge construction works

Single track operation (Yellow) Total closure (Red)

January							February							March							April																
kw	Mo	Di	Mi	Do	Fr	Sa	kw	Mo	Di	Mi	Do	Fr	Sa	So	kw	Mo	Di	Mi	Do	Fr	Sa	So	kw	Mo	Di	Mi	Do	Fr	Sa								
1			1	2	3	4	5	6					1	2	3						1	2	3	4	5												
2	6	7	8	9	10	11	12	3	4	5	6	7	8	9	10	2	3	4	5	6	7	8	11	6	7	8	9	10	11	12	13	14	15	16	17	18	
3	13	14	15	16	17	18	19	4	10	11	12	13	14	15	16	11	9	10	11	12	13	14	15	16	13	14	15	16	17	18	19	20	21	22	23	24	25
4	20	21	22	23	24	25	26	5	17	18	19	20	21	22	23	12	16	17	18	19	20	21	22	17	20	21	22	23	24	25	26	27	28	29	30		
5	27	28	29	30	31			6	24	25	26	27	28	29	13	23	24	25	26	27	28	29	18	27	28	29	30										
															14	30	31																				
May							June							July							August																
kw	Mo	Di	Mi	Do	Fr	Sa	kw	Mo	Di	Mi	Do	Fr	Sa	So	kw	Mo	Di	Mi	Do	Fr	Sa	So	kw	Mo	Di	Mi	Do	Fr	Sa								
18					1	2	3	23	1	2	3	4	5	6	7	27								31							1						
19	4	5	6	7	8	9	10	24	8	9	10	11	12	13	14	28	6	7	8	9	10	11	12	32	3	4	5	6	7	8							
20	11	12	13	14	15	16	17	25	15	16	17	18	19	20	21	29	13	14	15	16	17	18	19	33	10	11	12	13	14	15							
21	18	19	20	21	22	23	24	26	22	23	24	25	26	27	28	30	20	21	22	23	24	25	26	34	17	18	19	20	21	22							
22	25	26	27	28	29	30	31	27	29	30					31	27	28	29	30	31			35	24	25	26	27	28	29								
																							36	31													
September							Oktober							November							December																
kw	Mo	Di	Mi	Do	Fr	Sa	kw	Mo	Di	Mi	Do	Fr	Sa	So	kw	Mo	Di	Mi	Do	Fr	Sa	So	kw	Mo	Di	Mi	Do	Fr	Sa								
36			1	2	3	4	5	6	40					1	2	3	4	44							1	48							1				
37	7	8	9	10	11	12	13	41	5	6	7	8	9	10	11	45	2	3	4	5	6	7	8	49	1	2	3	4	5								
38	14	15	16	17	18	19	20	42	12	13	14	15	16	17	18	46	9	10	11	12	13	14	15	51	14	15	16	17	18	19	20						
39	21	22	23	24	25	26	27	43	19	20	21	22	23	24	25	47	16	17	18	19	20	21	22	52	21	22	23	24	25	26							
40	28	29	30					44	26	27	28	29	30	31	48	23	24	25	26	27	28	29	53	28	29	30	31										
															49	30																					