



*Rail Freight Corridor North Sea Baltic – Your East West Rail Bridge across Europe!*

Customer Information Platform – presentation of the last developments

RAG/TAG meeting 11.10.2018

Warsaw

Patrycja Urbańska



Co-financed by the European Union  
Connecting Europe Facility



## What is the Customer Information Platform?

**RNE CIP**  
Customer Information Platform

Dear customer, welcome to the Customer Information Platform of Corridor Rhine - Alpine  
PUBLIC Change password Logout

Map Information Documents  
Map

Public Map

Options

- Background map
  - None
  - Google Physical
  - Google Streets
  - Google Hybrid
  - Google Satellite
  - OpenStreetMap
- Corridor
  - Terminals
  - Nodes
- Line Properties
  - None
  - Corridor Lines
  - Line Cat. (Load Model)
  - Traction Power
  - Signaling Groups
  - Interm. Freight Code
  - Interop. Gauge
  - Interat. Gauge
  - Gradient (1)
  - Gradient (2)

**Segments**

Value
NAME
MANAGER
COUNTRY
CATEGORY
INTERMODAL_FREIGHT_CODE
INTEROPERATIONAL_GAUGE
LINE_CATEGORY
OPERATIONAL_GAUGE
TRACTION_POWER

**Terminals**

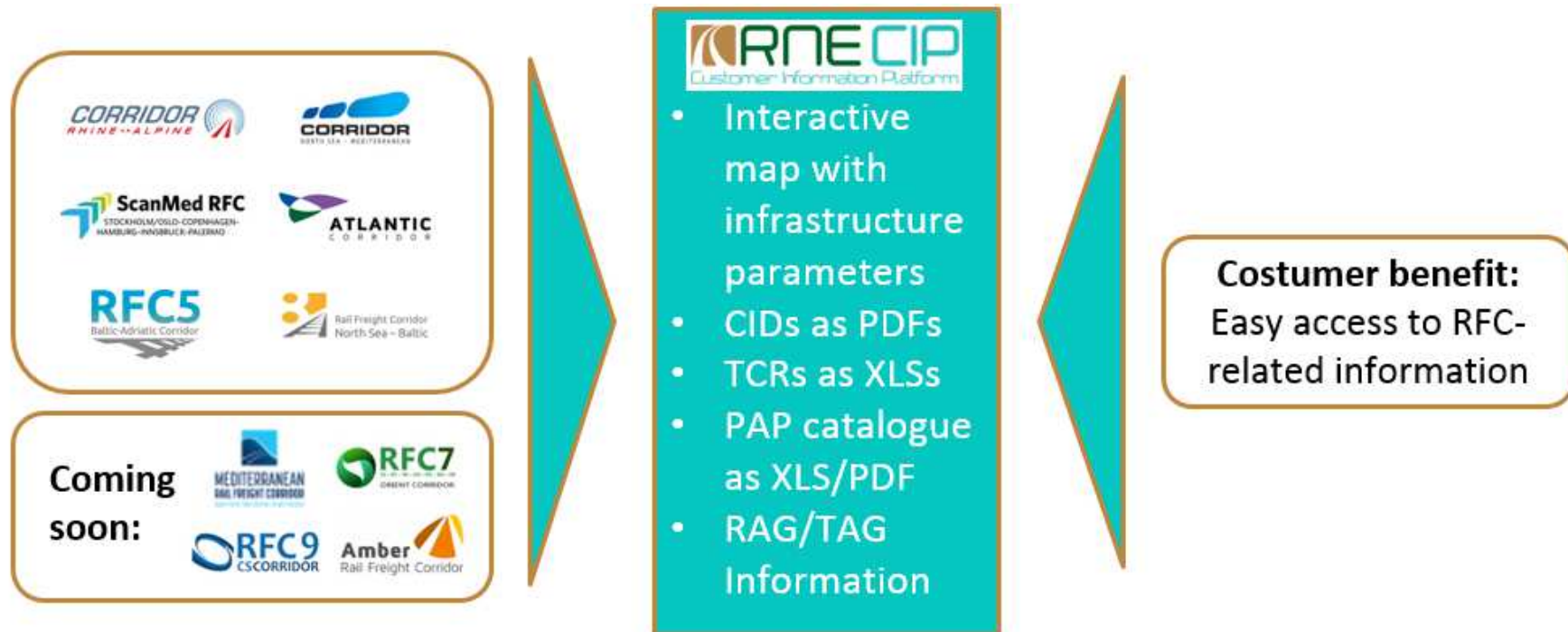
Value
Köln Niehl Hafen CTS
<a href="http://www.intermodal-terminals.eu/database/terminal/view/d/120">http://www.intermodal-terminals.eu/database/terminal/view/d/120</a>
Stapelkai 2, Niehl Hafen - 50735
Container/Intermodal Terminal

**Nodes**

Value
NAME
MANAGER
COUNTRY
CODE
CATEGORY
FTS_LLC
PLC

**Your single source of harmonised corridor information, 24 hours a day, 7 days a week.**

## Short term goal/collection of quick wins: Positioning of CIP as Information One-Stop Shop



- ✓ **Provide all RFC-related information in a harmonised format at a single spot:**
  - ✓ Reduction of complexity for customers when searching for information
  - ✓ The required information is already available, just presented differently



## Multi-corridor view is implemented in the interactive map

Multi-Corridor View: Dear Customer, please select the Corridor(s), the 'Interactive Map' of which you are interested in and then press the 'Set' button.

Leave Feedback

Free text Questionnaire

Public-Map

Options


- Background maps
  - ☐ None
  - ☐ Google Physical
  - ☐ Google Streets
  - ☐ Google Hybrid
  - ☐ Google Satellite
  - ☐ OpenStreetMap
- Corridor
  - ☐ Terminals
  - ☒ Nodes
- Line Properties
  - ☐ None
  - ☒ By Rail Freight Corridor
  - ☐ Corridor Category
  - ☐ Line Category (Load Model)
  - ☐ Traction Power
  - ☐ Signalling Groups
  - ☐ Intermodal Freight Code
  - ☐ Interoperable Gauge
  - ☐ Multinational Gauge
  - ☐ Gradient (1)
  - ☐ Gradient (2)

Search location

1 : 3466743

Legend

- None
- None
- Nodes
  - Railway Node or Junction
  - Border Point
  - Handover Point
  - Expected Node
- By Rail Freight Corridor
  - Rhine-Alpine (RFC1)
  - North-Sea-Mediterranean (RFC)
  - ScanMed (RFC3)
  - Atlantic (RFC4)
  - Baltic-Adriatic (RFC5)
  - North Sea-Baltic (RFC8)
  - expected









## Joint document structure used by all participating RFCs

Logged in as: PUBLIC

Interactive Map | **Information Documents**

Multi-Corridor View: Dear Customer, please select the Corridor(s), the 'Information Documents' of which you are interested in and then press the 'Set' button.

☒  ☒  ☒  ☒  ☒  ☒ 

**Tree Structure**

- Up
- ▼ **Public Information Document**
  - ▶ Corridor Information Documents (CIDs)
  - ▶ Capacity Offer
  - ▼ Temporary Capacity Restrictions (TCRs)
    - RFC Rhine-Alpine
    - RFC North Sea-Med
    - RFC ScanMed
    - RFC Atlantic
    - RFC Baltic-Adriatic
    - RFC North-Sea Baltic**
  - ▶ Key Performance Indicators (KPIs)
  - ▶ Annual Reports
  - ▶ Other Information Documents

**Pages**

Title  
RFC North-Sea Baltic

Page

Dear Customer,

for downloading the document please double click the below link:









[Temporary Capacity Restrictions RFC North Sea - Baltic for the timetable 2018 and 2019 \(update 15.12.2017\)](#)

# Corridor Information Documents (CID)

[Interactive Map](#)
[Information Documents](#)

[Home](#)
[Public](#)
[Administration](#)

Multi-Corridor View: Dear Customer, please select the Corridor(s), the 'Information Documents' of which you are interested in and then press the 'Set' button.

☒ 
☒ 
☒ 
☒ 
☐ 
☐ 
☐ 
☒ 

Tree Structure

Up

Public Information Document

Corridor Information Documents (CIDs)

Book 1 - Generalities TT 2019

RFC Rhine-Alpine

RFC North Sea-Med

RFC ScanMed

RFC Atlantic

RFC North-Sea Baltic

Book 1 - Generalities TT 2018

Book 2 - Network Statement Excerpts TT 2019

Book 2 - Network Statement Excerpts TT 2018

Book 3 - Terminal Description TT 2019


Book 3 - Terminal Description TT 2018

Pages

Title

Corridor Information Documents (CIDs)

Page



A Corridor is a complex project that follows a new set of rules and procedures. For this reason, it was created to provide all corridor information and to guide all applicants and other interested parties in line with Article 18 of the EU Regulation 913/2010. Together with RailNetEurope (RNE), the Corridors have developed most of the texts to allow an easier access to and understanding of this information.

The CID applies the RNE CID Common Structure so that all applicants can access similar documents in principle, as in the case of the national Network Statements, find the same information at the same place. The CID is divided into five books to clarify the specificity and independence of the key content of the document, an updating of the information. The Corridors together with RNE developed harmonised texts for all Books.

tps://ciptest.me.eu/apex/?p=212:170:937987341219::P170\_BOOKS\_LIST:500284





Rail Freight Corridor  
North Sea – Baltic

## Let's start using the tool! New customer-friendly login mask is available:



**Customer Login**

Dear customer, welcome to the Customer Information Platform of RFCs Rhine-Alpine, North Sea-Med, ScanMed, Atlantic, Baltic-Adriatic and North Sea-Baltic. To access the platform please key in the code in the answer field below. Dear internal user, please use the "Internal Login" link for login.

Security Code **e6rcw**

\*Answer

[Internal Login](#)

If you need support with accessing the system, please contact our Service Desk at [support.cip@rne.eu](mailto:support.cip@rne.eu)

Please try it and leave us your feedback!



## CIP General layout:

Interactive Map | Information Documents | Logged in as: PUBLIC | Logout

Multi-Corridor View: Dear Customer, please select the corridor you are interested in and then press the 'Set' button.

Leave Feedback | Ask question | Questionnaire

Public-Map

Options

- Background maps
  - None
  - Google Hybrid
  - OpenStreetMap
- Corridor Locations
  - Terminals
  - Nodes
- Corridor Line
  - None
  - By Rail Freight Corridor
  - Corridor Category
- Line Properties
  - None
  - Line Category (Load Model)
  - Traction Power
  - Signalling Groups
  - Intermodal Freight Code
  - Interoperable Gauge
  - Multinational Gauge
  - Gradient (1)
  - Gradient (2)
- Projects
  - None
  - Infrastructure
  - Signalling
  - ERTMS
- ETCS Deployment
  - None
  - ETCS Build Status
  - ETCS Deployment Type
  - ETCS Operational Level

Search location | Find a route | Define four meter load | 1 : 216671

Multi Corridor View

Layer Control:  
Fit to all corridors  
Switch on/off  
Switch between

Find a location  
Find a route

View and set scale

Legend with graphic representation and textual description

Coordinates (scroll down)

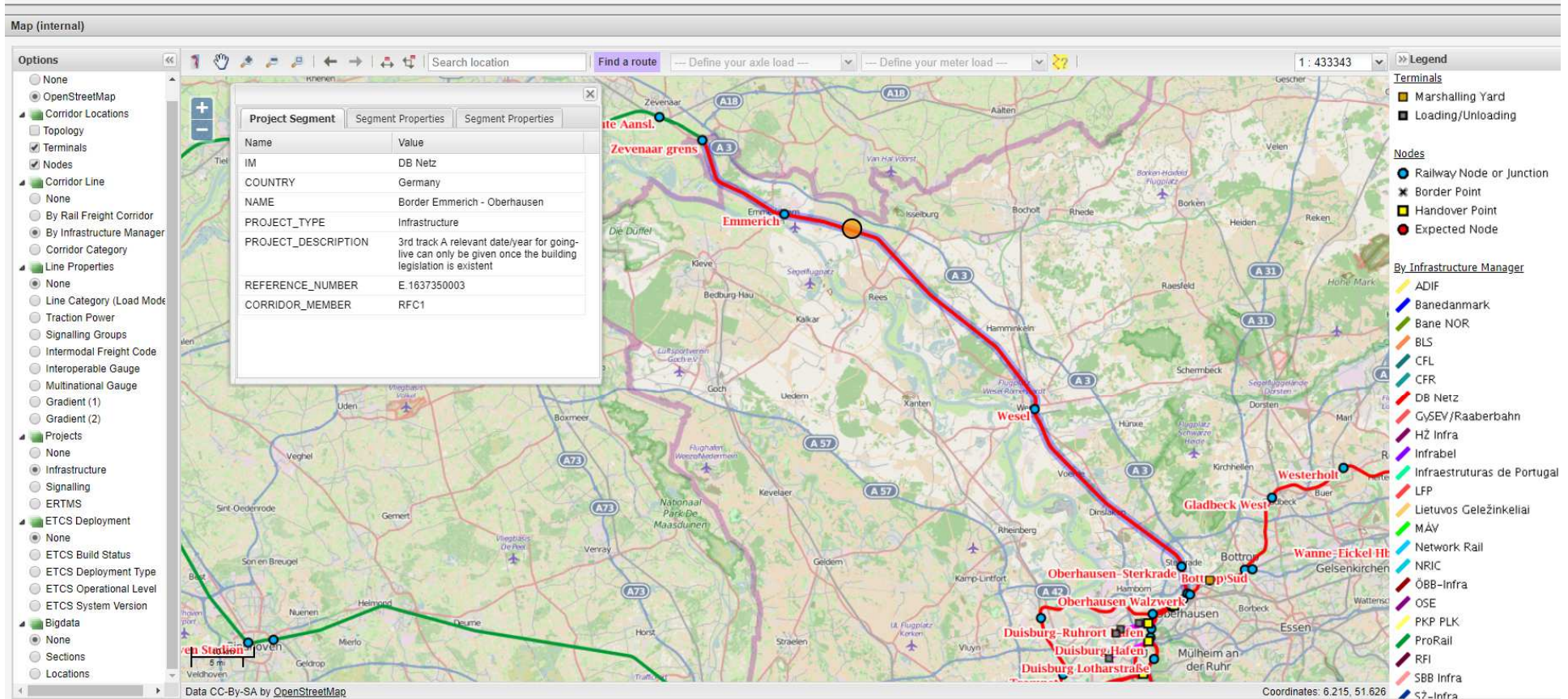
Legend

- None
- None
- None
- Terminals
  - Marshalling Yard
  - Loading/Unloading
- Nodes
  - Railway Node or Junction
  - Border Point
  - Handover Point
  - Expected Node
- By Rail Freight Corridor
  - Rhine-Alpine (RFC1)
  - North Sea-Mediterranean (RFC2)
  - ScanMed (RFC3)
  - Atlantic (RFC4)
  - Baltic-Adriatic (RFC5)
  - Mediterranean (RFC6)
  - Orient/East-Med (RFC7)
  - North Sea-Baltic (RFC8)
  - expected





# Infrastructure Projects:





# ERTMS Projects:

Interactive Map | Information Documents

Multi-Corridor View: Dear Customer, please select the Corridor(s), the 'Interactive Map' of which you are interested in and then press the 'Set' button.

Leave Feedback

Ask question Questionnaire

Public-Map

Options

- Background maps
  - ☐ None
  - ☐ Google Hybrid
  - ☒ OpenStreetMap
- Corridor Locations
  - ☐ Terminals
  - ☒ Nodes
  - ☐ Corridor Line
  - ☐ None
  - ☐ By Rail Freight Corridor
  - ☐ Corridor Category
- Line Properties
  - ☒ None
  - ☐ Line Category (Load Model)
  - ☐ Traction Power
  - ☐ Signalling Groups
  - ☐ Intermodal Freight Code
  - ☐ Interoperable Gauge
  - ☐ Multinational Gauge
  - ☐ Gradient (1)
  - ☐ Gradient (2)
- Projects
  - ☐ None
  - ☐ Infrastructure
  - ☐ Signalling
  - ☒ ERTMS
- ETCS Deployment
  - ☐ None
  - ☐ ETCS Build Status
  - ☐ ETCS Deployment Type
  - ☐ ETCS Operational Level
  - ☐ ETCS System Version

Search location Find a route Define your axle load Define your meter load 1:1733372 Legend

Nodes

- ☒ Railway Node or Junction
- ☒ Border Point
- ☒ Handover Point
- ☒ Expected Node

By Rail Freight Corridor

- ☒ Rhine-Alpine (RFC1)
- ☒ North Sea-Mediterranean
- ☒ ScanMed (RFC3)
- ☒ Atlantic (RFC4)
- ☒ Baltic-Adriatic (RFC5)
- ☒ Mediterranean (RFC6)
- ☒ Orient/East-Med (RFC7)
- ☒ North Sea-Baltic (RFC8)
- ☒ expected

ERTMS

- ☒ PROJECTS\_SEGMENTS
- ☒ PROJECTS\_NODES

Project Segment Segment Properties

Name	Value
IM	ProRail
COUNTRY	Netherlands
NAME	ERTMS OV SAAL
PROJECT_TYPE	ERTMS
PROJECT_DESCRIPTION	Implementing ERTMS on Amsterdam Muiderpoort West - Gaasperdammerweg aansl. (Amsterdam)
CORRIDOR_MEMBER	RFC8

Project Segment Segment Properties

Name	Value
NAME	Gaasperdammerweg aansl. (Amsterdam) - Hilversum
MANAGER	ProRail
COUNTRY	Netherlands
CATEGORY	Principal Line
INTERMODAL_FREIGHT_...	PIC 80/410
INTEROPERABLE_GAUGE	upon request
LINE_CATEGORY	D4
MULTINATIONAL_GAUGE	G2
TRACTION_POWER	1,5 KV DC
GRADIENT_1	5 - 10
GRADIENT_2	5 - 10
SIGNALLING_GROUP	Class B-System (Legacy)
SIGNALLING	ATB EG
CORRIDOR_MEMBER	RFC8

Data CC-BY-SA by OpenStreetMap

Home / Imprint / Legal notice

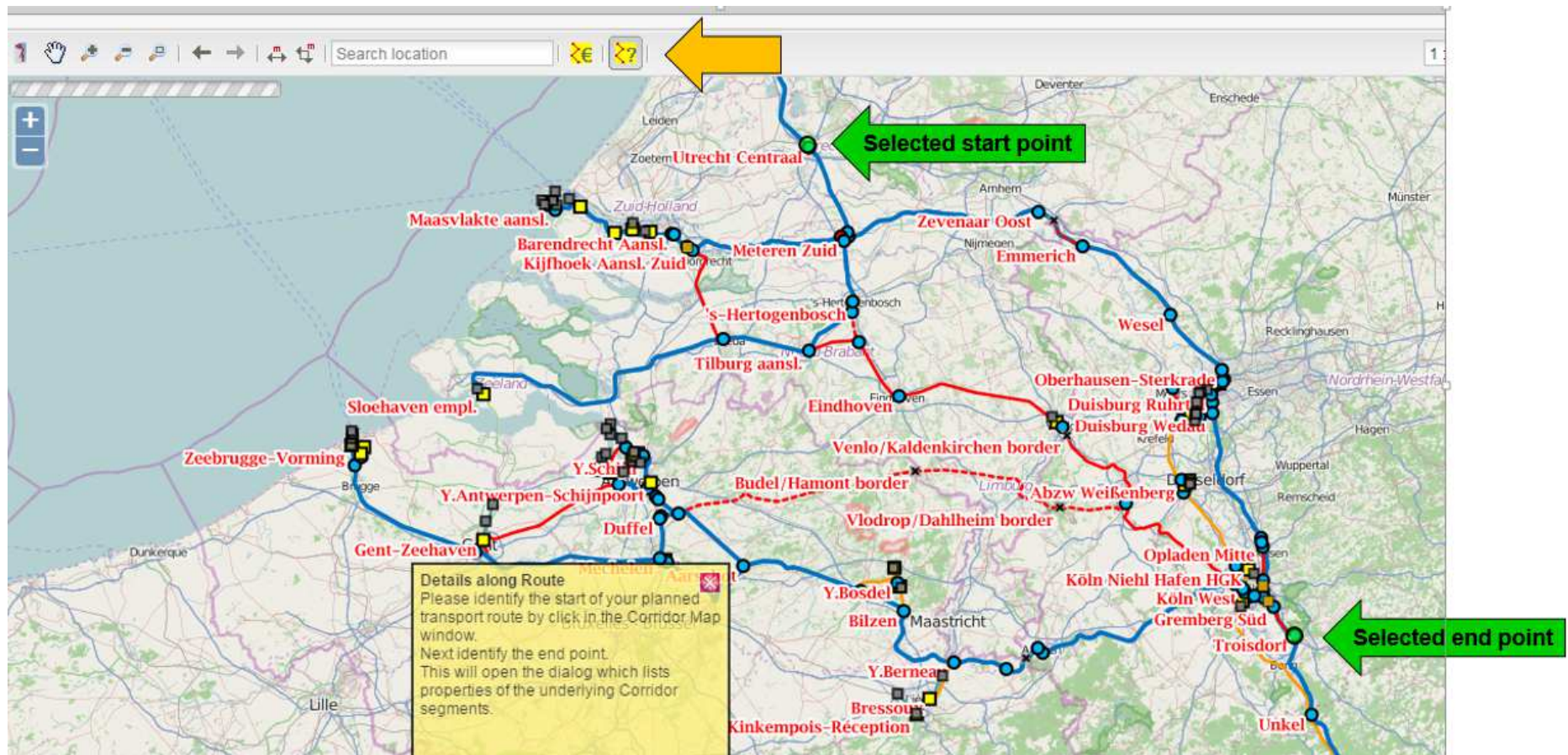
The contents of this Customer Information Platform (CIP) are for information purposes only and are not legally binding.

ARNECIP Co-financed by the European Union Connecting Europe Facility





## Details along the route tool:





## Adaptions to raise usefulness were defined:

Multi-Corridor View: Dear Customer, please select the Corridor(s), the 'Interactive Map' of which you are interested in and then press the 'Set' button.

**Options:**

- Background maps
  - None
  - OpenStreetMap
- Corridor
  - Topology
  - Terminals
  - Nodes
- Line Properties
  - None
  - By Rail Freight Corridor
  - By Infrastructure Manager
  - Corridor Lines
  - Line Category (Load Model)
  - Traction Power
  - Signaling Groups
  - Intermodal Freight Code
  - Interoperable Gauge
  - Multinational Gauge
  - Gradient (1)
  - Gradient (2)
- Projects
  - None
  - Infrastructure
  - Signaling
  - ERTMS
- ETCS Deployment
  - None
  - ETCS Deployment Type
  - ETCS Build Status
  - ETCS System Version

**Internal Map**

Search location

**Legend**

- None
- Nodes
  - Railway Node or junction
  - Border Point
  - Handover Point
  - Expected Node
- Corridor Lines
  - Expected
  - Principal
  - Connecting Line

**Route Details**

Go Rows: 15 Actions

Routing order	Segment Id	Name	Manager	Country	Category	Intermodal Freight Code	Line Ca
11348	332840	Bif de Rivecourt - Bif d Ageux ( Longueuil )	SNCF Réseau	France	Principal Line	upon request	D4
11349	334840	Bif d Ageux ( Longueuil ) - Gobitta	SNCF Réseau	France	Principal Line	upon request	D4
11350	333224	Gobitta - Bif de Rivecourt	SNCF Réseau	France	Principal Line	upon request	D4
11351	336408	Bif de Rivecourt -	Infrabel	Belgium	Principal	upon request	D4

**Enlargement of pop-up window and download of data**

# Route-finding functionality after the extension

Interactive Map | Information Documents

Multi-Corridor View: Dear Customer, please select the Corridor(s), the 'Interactive Map' of which you are interested in and then press the 'Set' button.

Leave Feedback

Ask question Questionnaire

Public-Map

Options

- Background maps
  - None
  - Google Hybrid
  - OpenStreetMap
- Corridor Locations
  - Terminals
  - Nodes
- Corridor Line
  - None
  - By Rail Freight Corridor
  - Corridor Category
- Line Properties
  - None
  - Line Category (Load Model)
  - Traction Power
  - Signalling Groups
  - Intermodal Freight Code
  - Interoperable Gauge
  - Multinational Gauge
- Projects
  - None
  - Infrastructure
  - Signalling
  - ERTMS
- ETCS Deployment
  - None
  - ETCS Build Status
  - ETCS Deployment Type
  - ETCS Operational Level
  - ETCS System Version

Search location Find a route ≥ 22.5t Define your meter load 1 : 1733372 Legend

1. Trigger the function

2. Instructions pop-up

3. Define your route (add up to 10 waypoint)

4. Filter based on axle and/or meter load (optional)

5. Start calculation

6. Result will be shown on the map

7. List of segments will be shown and available for further processing

Instructions

**Step 1 – Set route**  
Set up to 10 waypoints (in the required order) to be included in your route. As a minimum, the starting point and the end point need to be set. Note: By default, the shortest route between the selected points will be calculated.

**Step 2 – Set filter (optional)**  
If you select a filter (axle load and/or meter load), the route calculation will take that parameter into account as a minimum requirement. Note: Sections not matching the selected parameter will be marked with yellow.

**Step 3 – Start processing**  
By pressing the calculation will be started.

Route Details

Routing order	Name	Manager	Country	Category	Intermodal freight co
1	Y.Krijgsbaan - Lier	Infrabel	Belgium	Principal Line	P/C 70/400
2	Lier - Y.Noord Driehoek Aarschot	Infrabel	Belgium	Principal Line	P/C 70/400
3	Y.Noord Driehoek Aarschot - Y.Oost Driehoek Aarschot	Infrabel	Belgium	Principal Line	P/C 70/400

## How to access the CIP?

<https://cip.rne.eu/>

If you need support with accessing the system, please contact CIP Service Desk:

**For e-mail inquiries write to:**

[support.cip@rne.eu](mailto:support.cip@rne.eu)

**For inquiries by phone call:**

+43 1 907 62 72 25

### **Service Desk opening hours on working days:**

Monday - Thursday: 09:00 - 16:00

Fridays: 09:00 - 15:00

A direct link to the CIP can also be found on the webpage of the RFC North Sea – Baltic and other each participating RFCs:

[www.rfc-northsea-baltic.eu](http://www.rfc-northsea-baltic.eu)

- ✓ [www.corridor-rhine-alpine.eu](http://www.corridor-rhine-alpine.eu)
- ✓ [www.rfc-northsea-med.eu](http://www.rfc-northsea-med.eu)
- ✓ [www.scanmedfreight.eu](http://www.scanmedfreight.eu)
- ✓ [www.atlantic-corridor.eu](http://www.atlantic-corridor.eu)
- ✓ [www.rfc-baltic-adriatic.eu](http://www.rfc-baltic-adriatic.eu)





# Thank you for your attention!



Patrycja Urbańska  
Chief Expert  
RFC North Sea – Baltic Office  
[patrycja.urbanska@plk-sa.pl](mailto:patrycja.urbanska@plk-sa.pl)  
+48 600 090 015